

POTTER
—&—
POTTER
AUCTIONS



ADVERTISING TOYS & COIN-OP

SEPTEMBER 24, 2016



PUBLIC AUCTION #042

SESSION I
ADVERTISING,
TOYS & COIN-OP

SESSION II
ILLUSTRATION ART
& POSTERS

AUCTION
SEPTEMBER 24-25, 2016 ♦ 10:00 AM

EXHIBITION
SEPTEMBER 21-23 ♦ 10:00 AM - 5:00 PM

INQUIRIES
INFO@POTTERAUCTIONS.COM
PHONE: 773-472-1442



POTTER & POTTER AUCTIONS, INC.
3759 N. RAVENSWOOD AVE.
-SUITE 121-
CHICAGO, IL 60613



MOTORCYCLE AND CAR TOYS

1. **Antique Tin Litho Motorcycle.** [Spanish], second quarter twentieth century. Prewar wind-up tin litho motorcycle toy with two civilian riders (one female), attached sidecar, with a much smaller passenger. Working. Good.

100/200

2. **Arnold Civilian Motorcycle.** Germany: Arnold, mid-twentieth century. Wind-up tin litho toy, scarcer blue variation, marked "Made in Germany U.S. Zone." Original headlight. 7 1/2 x 5". Light discoloration to headlight cover. Working. Very good.

300/600

3. **Atom Motorcycle.** Japan: Modern Toys, mid-twentieth century. Battery-operated tin litho toy, rider mounts and dismounts bike when operating. 11 1/2 x 9". Light scratches, original outer wheels, light bulb replaced. Working with intermittent malfunctions. Good.

300/500

4. **Big Red 0158 with Sidecar.** France: J.M.L., mid-twentieth century. Tin litho wind-up toy motorcycle with sidecar. Brightly colored and marked "J.M.L." in multiple places. 12" long, sidecar 9 1/2". Some oxidation, small dents, lacking headlight. Very good.

600/900

5. **Blue French Motorcycle.** France: JML, ca. late 1930s. Wind-up tin litho toy, scarce blue paint variation of model "152," including wind key. 6 1/2 x 4 1/2". General soiling with some oxidation patches. Working. Good.

200/300

6. **Bugatti 6 Race Car.** France: JEP, mid-twentieth century. Wind-up tin litho toy car with nice blue and yellow colors. 6 1/2". Some scrapes and general wear to paint, small patches of oxidation. Working. Good.

100/150

7. **Cast Iron Motorcycle.** American, ca. 1920s. Small cast iron motorcycle with metallic teal and red paint. Original rubber wheels, marked "Made in USA." 4" long. Paint chipped and worn in multiple places, oxidation spots, and some light soiling. Good.

50/100

8. **Civilian Motorcycle.** Germany: Technofix, mid-twentieth century. Tin litho friction motorcycle toy, marked "Made in Western Germany," the number 15, and "3.50-19" on the wheels; mechanism partially exposed. 7 1/2". Not working. Very good.

100/200

9. **Civilian Rider with Saddlebags.** Germany: Tippco, mid-twentieth century. Friction tin litho motorcycle toy marked "TCO" in multiple places, sporting Dunlop Cord tires, and the license plate "TCO-598." 11 1/2" long. Some scrapes and oxidation patches. Not working. Good.

400/600

10. **Condor Motorcycle.** Japan: I.Y. Metal Toys, ca. 1950s. Friction operated tin litho toy of a Condor motorcycle and rider in a bright yellow jacket, license plate "1955." 12 x 8". Light scratches and small patches of rust. Working. Very good.

600/800



11



16



17



20



12

11. **Police Motorcycle with Double Headlights.** American, possibly by Hubley, ca. 1920s. Cast iron motorcycle toy with light blue paint and original rubber wheels. 4" long. Paint wear with oxidation on exposed areas, some soiling, wheel rubber with some crazing. Good.

50/100



18



21



13

12. **Police Motorcycle with Sidecar.** American, possibly by Hubley, ca. 1920s. Cast iron motorcycle toy with attached sidecar (without passenger) painted red and light blue with original rubber wheels. 4 x 2 1/2 x 2 1/2". Rubber wheels have hardened and have some crazing, light wear to paint, small oxidation spots. Very good.

50/100



19



22

13. **English Teal Car.** London: Wells-O-London, ca. 1930s. Tin litho wind-up toy of a fancy teal car with maroon details. Marked "Made in England" with license plate "XY-1142." 8 1/2". Some scratches. Working. Very good.

200/300

17. **French Red Police Car.** French, early twentieth century. Tin litho push-along toy with illustrations of police officers in the windows, using colors yellow, red, and black. Marked "S.P.9" on rear with Dunlop tires. 6 1/4" long. Some scratches and oxidation. Good.

250/350

20. **Group of Four Vintage Red Motorcycles.** Various makers and dates. Tin litho motorcycle toys, two push-along, one wind-up, and one friction powered. Makers include F.S.C., H.K.N., and Technofix. Wind-up toy includes key. By length (counterclockwise): 3 1/2", 3 1/2", 4 1/2", and 5 1/2". Friction toy not working, wind toy working. All have some scratches and light soiling. Good.

200/300



14

14. **F.64 Star Truck.** New York: Marx Toys, ca. 1930s. Tin litho wind-up toy of a truck (without bed attachment), decorated with stars and the text "F. 64" along with the Marx Toys logo on the front. 5" long. Edges worn, widespread oxidation. Working. Fair.

150/250

18. **Group of Three Vintage Plastic Motorcycles.** American, mid-twentieth century. Two made by Hubley, the third marked "Harley Davidson" with an articulated front wheel. Hubleys 5" long, Harley Davidson 4" long. Red Hubley with broken handlebar, headlight on green Hubley reattached, Harley Davidson in very good condition.

50/100

21. **Harley Davidson Moving Cylinder Motorcycle.** Japan: Nomura Toys, ca. 1959. Friction tin litho toy with moving cylinders when operating. 9 x 5". Light paint scratches and oxidation on handlebars. Working. Very good.

150/250



15

15. **Fire Department Car.** [French], mid-twentieth century. Tin litho, battery-operated car with mustachioed driver in coat. Driver's arms articulated, torso removes from base. 6 1/2 x 10". Light scratches. Not working. Very good.

100/200

16. **Flip-Over Motorcycle.** Germany: Huki, mid-twentieth century. Colorful tin litho motorcycle toy originally issued as a wind-up toy with mechanisms to flip itself over when operating, but which seem to have been removed and toy now operates by friction. 4" long. Very good.

100/200

19. **Group of Three Vintage Wind-Up Motorcycles.** Various makers and dates. Tin litho wind-up motorcycle toys, all working, one missing wind key. Two of the motorcycles are postwar, the other likely prewar. Postwar examples hallmarked "R" and "Schuco" respectively. Each approximately 5" long. All with light paint scratches, Schuco bike has some light soiling and oxidation patches and is missing its headlight. Working. Good.

250/350

22. **Highway Patrol Police Motorcycle.** Japan: Modern Toys, mid-twentieth century. Battery-operated tin litho toy with bright colors and a smiling policeman who dismounts and remounts the bike at intervals when operating. License plate "3199." 12 x 8 1/2". Light scratches to paint. Working. Very good.

300/400



23



26



29



30



24



27



28



25

23. **Highway Patrol Police Motorcycle.** Japan: Modern Toys, mid-twentieth century. Battery operated tin litho toy, policeman mounts and dismounts bike while operating. 12 x 8 1/2". Some scratches and rust patches, especially on seat, light soiling on wheels. Working. Good.

300/400

24. **Highway Patrol Police Motorcycle.** Japanese, marked with Rabbit symbol, mid-twentieth century. Friction operated tin litho toy of a police patrolman, "P.D. 110." 11 1/2 x 8 1/2". Light scratches, light discoloration on helmet. Working. Very good.

150/250

25. **Horse-Drawn Firefighting Vehicle.** Japan: T.M. Toys, mid-twentieth century. Tin litho friction-operated toy of a firefighter and his wagon pulled by two horses. 10 1/2" long. Missing reins. Scratching, especially on the top of water tank, light soiling, a few oxidation spots. Working. Good.

400/600

26. **Jumping Monkey Motorcycle.** Japan: Kanto Toys, mid-twentieth century. Wind-up tin litho toy, monkey on the back of the bike appears to jump on and off when operating. 6 x 4 1/2". Light scratches, rust spot on monkey's hat. Working. Very good.

150/250

27. **Kellerman Racing Motorcycle.** Germany: CKO, ca. 1935. Wind-up tin litho toy with two riders, the back rider and front wheel turn from side to side when operating. Includes wind key. 6 x 3 1/2". Back rider missing helmet, light paint scratches. Working. Good.

200/400

28. **Mac 700 Daredevil Motorcycle.** Germany: Arnold, mid-twentieth century. Tin litho wind-up motorcycle toy whose driver performs a trick, partially dismounting the bike while moving. Marked with "Mac 700" on fuel tank, three switches, original headlight, includes wind key. 8". Light scraping to paint on one side related to the movement of the rider. Working. Very good.

400/600

29. **Military Motorcycle.** Germany: CKAO, ca. 1930s. Wind-up camouflage-painted tin litho toy, with original helmet and a replaced headlight, wheels marked "Union Cord." 7 1/2 x 5 1/2". Light general wear. Working. Good.

200/400

30. **Military Motorcycle.** Japan: Sunset logo, mid-twentieth century. Colorful tin litho friction toy motorcycle, wing design on front of windshield with a "gun" attachment, original helmet. 5 1/2 x 4". Light scratches, not working. Very good.

200/300

31. **Modele 2002. French Open-Up Car.** France: S.G.D.G., mid-twentieth century. Wind-up tin litho toy that opens up the hood of the car and the front door when operating. Some tin components made with reused tin. 5 1/2". Some scraping to paint, some white paint specks. Working. Good.

50/100

32. **Monkey with a Fez Motorcycle.** Germany: Gama, ca. 1940s. Wind-up tin litho toy, with original felt tailcoat tails, detachable monkey and wind key. Labeled "Gama 125" and "Made in U.S. Zone Germany." 7 x 5". Light scratches and oxidation spots. Working. Very good.

200/400

33. **Motorcycle and Sidecar.** Russian, mid-twentieth century. Wind-up tin litho toy with bright orange and yellow paint, missing wind key. 9 1/2 x 6 1/2". Chipped painted and areas of rust/oxidation particularly at the back of sidecar. Fair.

50/100

34. **Motorcycle with Sidecar.** Paris: SFA, mid-twentieth century. Tin litho wind-up motorcycle toy marked "Paris: SFA" and "Made in France," as well as the model number, "2139-RP9." Unusual yellow variant, includes wind key. 7". Some scratches and oxidation patches. Working. Good.

150/300



31



32



33



34



35



36



37



38



39



40

35. **Motorcycle with Sidecar.** Paris: SFA, mid-twentieth century. Tin litho push-along motorcycle toy marked "Paris: SFA" and "Made in France," as well as the model number, "2139-RP9." Blue variant, includes wind key. 7". Some scratches and oxidation patches. Good.

150/300

36. **Motorcycle with Sidecar.** Paris: SFA, mid-twentieth century. Tin litho wind-up motorcycle toy marked "Paris: SFA" and "Made in France," as well as the model number, "2139-RP9." Unusual yellow variant, includes wind key. 7". Scratches and oxidation patches widespread. Not working. Fair.

100/200

37. **P.D. Patrol Motorcycle.** Japan, mid-twentieth century. Friction tin litho toy without a rider, white motorcycle with red and black details as well as plastic pieces. 9 x 5". Some scratches and light oxidation. Working. Good.

150/250

38. **Petite Starred Tank.** Possibly Swiss, mid-twentieth century. Tin litho push-along toy with colorful stars and the Swiss flag, tank gun attachment is mobile. 3" long. Some oxidation especially on edges and wheels. Good.

50/100

39. **Plaid Racer #15.** France: Technofix, mid-twentieth century. Tin litho wind-up toy motorcycle with bright colors and a slightly curved structure allowing toy to drive in a large circle when operating. Includes a wind key, not original. 7 1/2". Some scratches and oxidation patches. Working. Good.

150/250

40. **Police Car.** Japan: T.N., mid-twentieth century. Tin litho, battery-operated toy of a white police car with two officers: one holding a phone and the other driving. Driver's arms articulated. Emergency light on the back lights up and passenger officer raises phone to ear when operating. 11 x 6". Light scratching, light soiling. Working. Very good.

50/100



41

41. **Police Car and Motorcycle Escort.** German: P.N., mid-twentieth century. Tin litho police motorcycle and car toy, wind-up. Bike circles the car when operating. Missing wind key. Motorcycle 3 1/2" long, car 5" long. Scratches to litho, some color fading. Working. Good.

150/200

42. **Police Patrol Motorcycle.** Japan: marked with Rabbit symbol, mid-twentieth century. Friction operated tin litho toy of a police patrolman, "P.D. 512." 9 1/2 x 7 1/2". Light scratches. Working. Very good.

100/200

43. **Police Motorcycle.** Japan: K, mid-twentieth century. Tin litho wind-up motorcycle toy of a police officer, pedals attached to both sides wind the toy. 7". Light scratching and soiling. Working. Very good.

150/200

44. **Police Motorcycle.** New York: Marx, ca. 1935. Colorful tin litho wind-up toy motorcycle with a "Start" and "Stop" switch, marked "Made in U.S.A." 8 1/2" long. Widespread scratching and oxidation spots. Good.

150/200

45. **Police Motorcycle with Sidecar.** New York: Marx Toys, ca. 1950s. Wind-up toy with attached sidecar and siren. 8 1/2 x 6". Light scratches, sidecar has original windshield (cracked), wind key missing. Very good.

250/350

46. **Policeman Motorcycle.** Japan: Alps, mid-twentieth century. Friction operated tin litho toy with simulated siren sound and battery operated lights, both function (bulbs replaced). 12 x 8". Light scratches to paint, some rusted areas and light dents. Tail light cover missing. Working. Good.

250/350



42



43



44



45



46



47



51



48



49



50

47. **Policeman on a Green Motorcycle.** Germany: Tippco, mid-twentieth century. Friction tin litho motorcycle toy of a policeman marked with "TCO" in multiple places, original windscreen, marked "Made in Western Germany," and with the license plate "TCO-598." 11 1/2". Some oxidation areas on open metal, light scratching on paint. Working. Good.

300/600

48. **Pre-WWII Tricycle.** Germany: D.R.G.M., early twentieth century. A tin litho toy with a wind-up coil mechanism and lovely detailed red, green, and blue paint. A young boy in a uniform sits up front. Reused tin in mechanism with German language lithography. 4 1/2 x 4". Light soiling, one wheel split along seam, some oxidation. Good.

500/600

49. **Pre-WWII Tricycle.** Early twentieth century. Small tin litho wind-up toy of a man riding a tricycle, mechanism exposed at rear. 4 x 4". Light soiling, light chipping to paint. Working. Good.

200/400

50. **Punch Delivery Cart.** France: Jouets Monte Blanc, mid-twentieth century. Friction-operated delivery bicycle toy with the words "Punch livre a domicile," and "Klaxonnez Punch vous laissera passer." When operating, boy seems to be pushing pedals down and his head also moves up and down. 6 x 5". Light soiling and scraping of paint. Working. Very good.

200/300

51. **Racing Motorcycle.** Germany: Technofix, ca. late 1940s. Wind-up tin litho toy of a racer, model "G.E. 255," marked "Made in U.S. Zone Germany." Includes removable wind key. 7 x 5". Scratches and some light oxidation. Mechanism partially working. Good.

200/300



52



53



54



55



56



57

52. **Racer #10 in Blue.** Japan: Moto, mid-twentieth century. Tin litho friction toy motorcycle with a racing rider and loud "engine" sound, windshield seems to be original. 6". Light scratches. Working intermittently. Good.

50/100

53. **Racer Motorcycle #6.** France: J.M.B, mid-twentieth century. Tin litho wind-up motorcycle toy of a civilian racing motorcycle with #6 on his back, rubber seam or bumper attached at metal edges, missing original helmet. 7 1/2". Discoloration to rubber, light scrapes to paint. Working. Good.

200/300

54. **Red and Green Buggy.** Japan: Linemar Toys, mid-twentieth century. Tin litho wind-up toy of a red and green buggy car with driver, license plate "1914," detailed underbelly. 5 x 5". Light oxidation spots, one wheel has bent spokes. Working intermittently. Very good.

200/300

55. **Red Civilian Racer.** German: Huki, ca. 1950s. Tin litho wind-up toy motorcycle, red with a rider wearing red boots and red jacket, marked "K-1021" and "Made in U.S. Zone Germany," includes original wind key. 6 1/2". Some scratches and oxidation. Works with coaxing. Good.

100/200

56. **Red Racer #8.** Early twentieth century. Tin litho push-along toy car, majority red and black with white highlight colors and a dark green grill. 5 1/2". Some scratches and oxidation, especially on wheels and underside of tin. Good.

50/60

57. **Red Zündapp Bella Motor Scooter.** Western Germany, mid-twentieth century. Friction tin litho toy, red moped marked "Bella" with rider in blue jacket. 8 x 8". Working. Excellent.

600/900



58



61



64



66



59



62



67



65



68



60



63



69

58. **Rookie Police Officer with Siren.** New York: Marx Toys, ca. 1950s. Tin litho wind-up motorcycle toy with siren that sounds when operating. Marked on illustrated wheel as "Louis Marx & Co., New York. Made in United States of America Pat's Pend'g." Includes wind key. 8 1/2". Color faded from orange to mostly yellow, some scratches and light soiling. Working. Good.

150/250

61. **Sapeurs-Pompiers Car.** France, ca. 1946. Wind-up tin litho toy with coil mechanism, bright yellow and red colors with the mark "1946 R. L. France" on the back end. 6" long. Widespread oxidation on wheels and inside on mechanism and underside of car, some scratches and oxidation on surface paint. Not working. Fair.

100/200

64. **Speed Boy 4 Delivery Motorcycle.** New York: Marx Toys, mid-twentieth century. Wind-up tin litho toy of a delivery boy on his motorcycle. 10 x 6". Paint scratched, some oxidation spots particularly in delivery box. Working. Good.

200/300

67. **Two Vintage Motorcycle Toys.** Germany and Japan: mid-twentieth century. Two tin litho motorcycle toys, one friction and one clockwork-powered. Each toy numbered, the wind-up toy including key. Both 5" long. Light scratches and small oxidation patches. Wind-up toy works, the other does not. Good.

150/250

59. **Rookie Policeman Motorcycle.** New York: Marx Toys, ca. 1950s. Wind-up tin litho toy of a rookie policeman with attached siren. 8 1/2 x 6". Light scratches, some oxidation to handlebars, one wheel seems to be wooden replacement. Mechanism partially working. Good.

200/300

62. **Silver Pigeon Scooter.** Japan: Marusan, mid-twentieth century. Tin litho friction toy scooter with two passengers, colorful and detailed graphics, and original windshield. Marked "Silver Pigeon" on both sides. 5 1/2". Excellent condition, working intermittently. Scarce.

800/1,200

65. **Teal Motorcycle and Sidecar.** France: J.M.L., mid-twentieth century. Tin litho wind-up teal motorcycle and sidecar with their civilian driver, marked "J.M.L.," and including wind-key. 8 1/2 x 5 1/2". Scraping and light soiling, some oxidation patches. Working. Good.

300/500

68. **Battery-Operated Speedway Indy Car Racing Toy.** Japan [?], ca. 1950s. Lithographed tin, rubber, and plastic. Red with blue and silver stripes, number 85, with advertising for Lotus Ford, Shell, Prestone, Valvoline, Schneider, NGK, Sun Instruments, and Torco Motor Oil. 16 x 7 x 4". Minor scratches and losses from light playwear, but very good overall. Three speed settings, compartment for three D batteries. Not working.

200/300

60. **Round-About Racer 25.** Japan: Stone, mid-twentieth century. Tin litho motorcycle toy with attached rubber suction cup that keeps motorcycle going in a circle when operating. 4" long. Oxidation on handlebars and wind keys, light scratches on litho.

50/100

63. **Spanish Teal Car.** Spain, early twentieth century. Tin litho toy car with teal and blue paint, marked "Juguetes Rai Ford" on the back. Push-along toy with likely original wheels. 5". Light scratches, some oxidation on underside. Good.

100/200

66. **Two Racing Motorcycles.** Japan, mid-twentieth century. Two small tin litho friction motorcycle toys from the same maker, both with colorful litho and interesting shape. One marked "Thunderbird" with the number 77. 6" and 3 1/2" in length. Both with light soiling and scratches. Both working well. Very good.

100/200

69. **Wen-Mac Automite Engine Powered Racing Car.** Los Angeles, 1953. Model car in manufacturer's box, with instructions. 10 1/2 x 5 x 3". Box worn and soiled, else good.

50/100



70



71



72

70. **Wind-Up Moped.** Mid twentieth century. Wind-up moped tin litho toy, green with rider in red jacket and plaid yellow socks. 5 3/4 x 5". Some scratches and wear. Working. Good.

250/350

71. **World Champion Motorcycle.** Japan: Modern Toys, mid-twentieth century. Battery operated tin litho toy of a World Champion biker (scarce variation), rider mounts and dismounts when operating. 12 x 9". Light scratches. Working. Very good.

600/900

72. **Yellow and Green Racer 3.** France, mid-twentieth century. Wind-up tin litho toy car with a coil mechanism and brightly colored paint. 8" long. Light scratches to litho. Working. Very good.

200/300



73



74



75

73. **Atom Flash Zoomeray.** Chicago: Tigrett Enterprises, 1950s. Red plastic toy ray gun, shooting a roll of paper from the barrel when flicked by the wrist. Space-themed roll with shiny metallic fringed end. In original display packaging. 7 1/2 x 4 1/4". With box showing a few small spots and creases. Toy in mint condition.

100/200

74. **Atom Ray Gun Squirt Gun.** American, Hiller Manufacturing, ca. 1940s. Cast metal toy squirt gun with a water chamber and the words "Atom Ray Gun" between lightning bolts. 6 1/2" long. Some light dents on water chamber, some corrosion related to water and use. Not tested with water, but trigger action working. Good.

150/250

75. **Atom Ray Gun Squirt Gun.** American, Hiller Manufacturing, ca. 1940s. Cast metal toy squirt gun with a water chamber and the words "Atom Ray Gun" between lightning bolts. 6 1/2" long. Missing washer beneath water chamber cap, some corrosion in water chamber related to use, light dents and scratches. Not tested with water, but trigger action working. Good.

150/250

TOY GUNS



76



77



78



79

76. **Atomic Disintegrator Repeating Cap Pistol.** Lancaster, Penn.: Hubley Manufacturing Co., ca. 1940s. A die-cast toy cap gun with original plastic handles and great details. Includes original box. 8" long. Toy has a few very light oxidation spots; box has some worn edges, torn flap, and some scraping. Not tested with caps, but trigger mechanism seems to be working well. Very good.

300/600

Featured in "ZAP! Ray Gun Classics" by Leslie Singer (*Chronicle Books*, 1991) and described as "one of the most beautiful ray guns ever made" (p. 26, Fig. 18).

77. **Atomic Gun.** Japan: HAJI, ca. 1960s. A sparking toy ray gun with a tin litho body and transparent red plastic barrel through which you can see the sparks when operating. Friction-operated, also makes firing sound. 9" long. Few scratches to litho. Working. Excellent.

200/300

78. **Atomic Jet Space Police Cap Gun.** Cromwell, Conn.: J&E Stevens Co., ca. 1954. One of the larger toy guns produced by this company, this is the gold-tone finish version. Includes original box with phrases like "Shoots cosmic smoke rings," "radial cooled," and "safe and harmless!" 8" long. Very light wear on toy. Box edges are worn, some scraping, one side flap torn off. Not tested with caps, but the trigger mechanism is working. Very good. Scarce.

600/900

79. **Atomic Jet Space Police Cap Gun.** Cromwell, Conn.: J&E Stevens Co., ca. 1954. Metal toy ray gun, one of the larger toy guns produced by this company, this is the chrome finish version with the words "Neutron Blaster" on one side. 8" long. Very light wear on toy, a few small chips to chrome paint. Not tested with caps, but the trigger mechanism is working. Very good. Scarce.

400/600



80



84

80. **Buck Rogers Liquid Helium Water Pistol XZ-44.** Plymouth, Mich.: Daisy Manufacturing, ca. 1936. Stamped metal and painted water gun with leather sack inside to hold water. Red and yellow version. 7 ¼" long. Some scuffing to raised areas, especially grip on handle, other light scratching. Not tested for functionality. Very good.

400/600

81. **Buck Rogers Red Rubber Helmet.** Late 1950s. Red rubber space helmet from the Buck Rogers franchise, with original chin strap and inner padding/lining. Marked "M 20" on back. Approx. 10 x 9" exclusive of chin strap. Some light general soiling, a few small black spots. Very good.

200/400

82. **Buck Rogers U-235 Atomic Pistol.** Plymouth, Mich.: Daisy Manufacturing, ca. 1940s. Gold-tone finish version of this metal toy gun from the Buck Rogers franchise. 10" long. Some oxidation on exposed metal parts, light scratching on paint. Working. Very good. Includes helmet only.

100/300

83. **Buck Rogers Venus Duo Destroyer.** Chicago: Tootsie Toy, ca. 1937. Red and yellow rocket-shaped tin litho toy from the Buck Rogers franchise. 5 x 2". Some paint scratches and chips. Good.

50/100

84. **Buck Rogers XZ-31 Rocket Pistol.** Plymouth, Mich.: Daisy Manufacturing, ca. 1934. The first metal space gun or ray gun made, composed of pressed steel with the name and manufacturer on the body of the gun and a small image of Buck Rogers on the handle. 10" long. General oxidation over the majority of the toy, words and images worn a bit but still legible. Not working. Good.

200/300

85. **Buck Rogers XZ-31 Rocket Pistol with Holster.** Plymouth, Mich.: Daisy Manufacturing, ca. 1934. The first metal space gun or ray gun made, this gun is pressed steel with the name and manufacturer on the body of the gun and a small image of Buck Rogers on the handle. Holster belt has images of rockets and Buck flying. Toy gun is 10" long, holster is 11" with 28" belt. Gun has light wear, widespread light scratches, and some oxidation. Holster leather has light wear in areas it comes in contact with the gun. Not working. Very good.

300/500

The beginning of perhaps one of the most successful merchandising and sales campaigns in the history of the American toy business, this gun was first drawn in the Buck Rogers comics for the sole purpose of being produced as a toy.

86. **Buck Rogers XZ-35 "Wilma" Pistol and Holster.** Plymouth, Mich.: Daisy Manufacturing, ca. 1935. A smaller version of the Buck Rogers XZ-31, marketed as the weapon of his cohort Wilma Deering. Gun 8" long, holster 9" long. Light spots of oxidation and soiling, holster does not have belt and has light wear to leather. Not working. Very good.

200/300

87. **Captain Meteor Cosmic Ray Gun and Holster.** New York: Ranger Steel Products Corp., late twentieth century. Red and blue plastic ray gun with transparent barrel that makes firing noise when trigger is pulled. Printed silver and black leather holster with belt loop and belt. Toy gun is 8" long, holster about 10" with approximately 28" belt. Toy gun in used condition, top blue plastic piece is separating from barrel, some scuffing and general light soiling. Holster has some areas with light stains. Working. Good.

100/200

88. **Captain Video: An Exciting Space Game! Board Game.** Springfield, Mass.: Milton Bradley, ca. 1950s. Game by the same company that produced "Chutes and Ladders," this game is based on dial spins to get to "Dr. Pauli's" planet at the center of the board. Includes original box. 19 ¼ x 9 ½" in box. Board has light flaking at crease in center, fold out with dials fragile around folds, missing one blue play piece. Excellent.

50/100

89. **Captain Video Secret Ray Gun.** New York: Power House Candy, ca. 1950s. Plastic red toy gun with original light bulb, box, and pamphlet. 4" long. Toy is near mint and unused, stain on planet map card, box has two small tears. Not working. Very good.

100/200



85



86



87



88



89



90



91



94



92



93



95



96



99



97



100



98



101

90. **Clicka Bubble Shooter.** New York: Ranger Steel Products Corp., late twentieth century. Plastic toy gun with red barrel and yellow body and trigger. When dipped in bubble solution this toy would shoot bubbles. Includes original box and bottle for bubble solution (empty). Box is a fold up display box. 7 1/2" long. Lightly used condition, box has worn edges and fold up area perforated edges have been separated from main box lid. Not working. Good.

50/100

91. **Collection of Vintage Space and Rocket Related Penny/Gum Toys.** Mid-late twentieth century. Including five rocket toys, one bubble gum space gun, and ten children's rings with space themed images (including three related to Tom Corbett). Most items made of plastic; all rocket toys have some metal components and one is just made of metal. Largest 11" long. Some stickers have fallen off rings, otherwise most pieces in good condition.

50/100

92. **Double-Barreled Space Gun.** Japan: S.H., ca. 1950-60s. Colorful tin litho friction-operated double-barreled space gun toy that when operating clicks loudly and moves both barrels in and out of gun body. 10" long. Light oxidation spots. Working well. Very good.

150/250

93. **Eight Sound Laser Cannon.** Manufactured in China for Tandy Co. (Radio Shack), Fort Worth, ca. 1990s. Blue plastic large toy gun with a series of sound effect while operating. Includes original box. 12" long. Battery area corroded, box with very light edge wear. Not tested. Good to very good.

50/100

94. **Flash Gordon Air Ray Gun.** Chula Vista, Calif.: Budson Company, ca. 1940s. Red-colored tin litho toy air gun made for the Flash Gordon franchise in the 40s. Lift the top piece and press down to cock gun and then fire a puff of air. Original inner mobile lining intact and still flexible. 11" long. Some scratches and scuffs to color on body, Flash Gordon decal unaffected. Working well. Very good.

300/400

95. **Flash Gordon Click Ray Pistol.** New York: Marx Toys, ca. 1950s. Tin litho clicker-action toy pistol featuring the King Features character Flash Gordon, multi-colored toy marked "Arresting Ray." Includes original box. 10 x 4 1/2". Light scratches on toy, box has some light tears and worn edges. Very good.

400/600

96. **Flash Gordon Radio Repeater Click Pistol.** New York: Marx Toys, ca. 1935. Tin litho clicker-action toy pistol featuring the King Features character Flash Gordon. Includes original box. 10 x 4 1/2". Light scratches on toy, box has some scraping and light tearing. Clicker-action working. Very good.

600/900

97. **Flash Gordon Signal Pistol.** New York: Marx Toys Co., 1930s. Pressed steel and painted toy gun with siren noise and sparks when operating. 7" long. General scuffing and scratching, affecting body and Flash Gordon decal. Oxidation affecting exposed metal areas. Siren sound working well, does not produce sparks. Good.

300/400

98. **Flash Gordon Signal Pistol.** New York: Marx Toys Co., 1930s. Pressed steel and green-painted toy gun with siren noise and sparks when operating. 7" long. General scuffing and scratching, affecting body and lightly affecting Flash Gordon decal. Siren sound working well, does not produce sparks. Good.

300/400

99. **Glass Space Gun Style Candy Container.** Jeannette, Penn.: T.H. Stough Co., ca. 1930s-40s. Very small glass sweets container with the manufacturer indicated as well as the ingredients, "Sugar, Starch, Corn Syrup" and "Certified Colors, 1/4 Oz." Includes original cap. 4" long. Some residue inside, cap oxidized and will not twist off. Very good.

50/100

100. **Gray and Black Ray Gun.** New York: Ideal Toy Company, late twentieth century. Black and gray/silver plastic toy gun with metal trigger, marked "IDEAL." 7 1/2" long. Black paint scratched and scuffed, light soiling. Not working. Good.

50/100

101. **Group of Two Black Plastic Toy Ray Guns.** Brooklyn, New York: Palmer, mid-late twentieth century. Includes one water gun and one paper buster gun. 6" long. Paper buster gun trigger action working, not tested with paper shots; water gun not tested, missing cap for water chamber. Good.

50/100



102

102. **Group of Two Space Ranger Badges.** American, mid-twentieth century. One metal and one plastic space ranger badge, both with original cards attached. One for the "Pocky Jones" franchise, the other is generic. Metal badge is 2 1/2" with 4 1/4 x 3 1/4" card, plastic badge is 3 1/4" across with 5 x 4" card. Light wear on both badges. Very good.

50/100



103

103. **Group of Three Plastic Space Control Guns.** Late twentieth century. Three plastic toy space guns of the same make with two types: red (2) and silver (1), all three with yellow triggers. 5 1/2" long. All three with working clicker-action. Good.

50/100



104

104. **Group of Four Vintage Plastic Toy Rayguns.** American and Chinese, mid or late twentieth century. Includes one friction-operated noise-making gun, one clicker-action gun, one flashlight gun, and another white-marbled plastic toy gun with a "flying saucer" style body. 6 to 8 1/2" long. Some light soiling on all toys, three toy guns working. Good.

50/100



105

105. **Group of Five Vintage Plastic Space Guns.** Various dates and makers, mid or late twentieth century. Small plastic toy space guns, some with specific trigger actions like clickers and squeaks. 4 1/2 to 5 1/2" long. One not working, all others trigger actions work. Good.

50/100

106. **Group of Seven Ray Gun and Rocket Vintage Plastic Toys.** Various dates and makers, mid or late twentieth century. Includes two keychains, two pencil sharpeners, one "Put & Take Apart" puzzle, and two toys that shoot tiny colorful plastic balls. All between 2 and 3" long. Working. Good to very good, one item mint in original plastic packaging.

50/100



106

107. **Group of Seven Vintage Toy Guns.** Various dates and makers. Mid or late twentieth century. Includes three plastic squirt guns, two in original packaging. Also includes three larger toy guns, two plastic and one tin litho, as well as a cardboard gun made for "Flash Gordon Rangers." Tin toy gun marked "Tommy Toys" and has a clicker trigger action, on plastic gun is camo-colored, and the last is also a clicker action and marked "Electra." 5 to 6 1/2" long. Clicker toys work, squirt guns not tested for functionality. Good.

50/100



107



108

108. **Jet Jr. Space Police Cap Gun.** Cromwell, Conn.: J&E Stevens Co., ca. 1950s. "New Jr. Space Police Fully Automatic Repeater Cap Gun," that is "Safe!" and "Harmless!" in a "Radiant Silver Finish." Includes original box. 6 1/2". Very light wear on toy, box has some edge wear and a few small tears. Very good.

200/400

109. **Jet Jr. Space Police Cap Gun.** Cromwell, Conn.: J&E Stevens Co., ca. 1950s. "New Jr. Space Police Fully Automatic Repeater Cap Gun," with a shiny chrome finish. 6 1/2" long. Very light wear on toy, on chip in chrome paint on fin. Trigger action working. Very good.

150/250

110. **Jupiter Four Color Signal Gun.** Newark: Remco, ca. 1959. Battery operated plastic toy four-color signal gun with original box. When trigger is pulled, gun makes a loud noise and light shines, color controlled by the dial at front. 9" long. Two spots of tape residue on toy, box has lightly worn edges. Working very well. Very good.

100/200

111. **Jupiter Four Color Signal Gun.** Newark: Remco, ca. 1959. Battery operated plastic toy four-color signal gun with original box. When trigger is pulled, gun makes a loud noise and light shines, color controlled by the dial at front. 9" long. One piece of tape attached to help hold batteries in their slot, box has lightly worn edges. Not working. Very good.

100/200

112. **Kit Carson "Wee Westerner" Double Holster Cap Gun Set.** Circa 1960s. Two cap guns with holsters and accessories, in original pictorial packaging. Very good.

150/200

113. **Little Astronauts Ray Gun.** Mid-twentieth century. Colorful tin litho and plastic toy gun with illustrations of astronauts on the body and a rocket on the handle, transparent plastic barrel with red piece that pumps in and out of gun when operating. 10" long. Light scuffs. Working well. Very good.

100/200



109



110



111



112



113



114



115



116



117



118



119

114. **Lot of 13 Assorted Vintage Cap Guns.** Various manufacturers, ca. 1920s - 50s. Cast and pot metal, including various models by Smith & Wesson, Hubley, Kenton, and others. All very good with age-consistent wear.

200/300

115. **No. 100 "Mac" Machine Gun.** Pittsburgh: McDowell Manufacturing. Red long-barreled paper buster toy gun with green paper roll holder and black handle. Includes box with colorful illustrations. 13 1/2" long. Gun has some worn areas and scratches. Box has light wear on edges and corners with one small tear. Not tested with paper shots. Very good.

100/200

116. **Nu-Matic Paper Popper Gun.** Chicago: Langston Manufacturing Co., ca. 1936. One of the first toy guns designed to make a "pop" without the use of caps. Black metal toy gun with holder for paper shots attached to barrel. 7" long. Light spots of oxidation, few paint scratches, light soiling. Trigger mechanism works, not tested with paper shots. Very good.

100/200

117. **Official Buck Rogers Sonic Ray.** Chicago: Norton Engineering & Manufacturing Co., ca. 1952. The black, green, and red version of this plastic, battery-operated toy gun produced for the Buck Rogers franchise. Including original box with descriptive insert but missing "secret booklet." 7" long. Toy in unplayed condition, box has significant water damage and some tears. Not working. Very good.

100/200

118. **Official Buck Rogers Sonic Ray.** Chicago: Norton Engineering & Manufacturing Co., ca. 1955. The red, green, and yellow version of this plastic, battery-operated toy gun produced for the Buck Rogers franchise. Includes original box, but descriptive insert and "secret booklet" are missing. 7" long. Toy has some light soiling; light, light rim, and the plastic lens for the end of gun are separate pieces in the box. Box has significant water damage and some related tears.

100/200

119. **Official Buck Rogers Sonic Ray.** Chicago: Norton Engineering & Manufacturing Co., ca. 1955. Black, green, and red plastic version of this toy, it becomes a flashlight when trigger is pulled. Includes original light. 7 1/2" long. Some scuffs, light soiling. Not working. Good.

50/80

120. **Patriotic Sparkling Celebration Pistol.** New York: Marx Toys Co., 1930s. Pressed steel and painted toy gun that originally made siren noise and sparks. Decal is reminiscent of the 1876 "Spirit of '76" painting by Archibald McNeal Willard. Scarce. 7" long. General scratching and scuffing to paint and decal, oxidation on exposed metal parts. Not working. Fair.

500/600

121. **Paper Buster Gun.** Mid-twentieth century. Toy paper buster machine gun with roll of paper loaded. 9 1/2" long. Widespread oxidation and scratches. Not tested. Fair.

50/80

122. **Pop Ray 33 Repeater.** Wyandotte: All-Metal Productions Co., ca. 1930s. Painted steel toy pop gun. 7" long. General wear and some oxidation affecting paint, particularly at the base of the body. Working. Fair.

100/200

123. **Rocket Bicycle, Moped, or Motorcycle Headlight Attachment.** Late twentieth century. Chrome light with orange fins that spin when the air moves past them. Includes wire to power. 9" long. Some light scuffs. Not tested for functionality. Very good.

50/100

124. **Rocket Dart Pistol.** Plymouth: Daisy Manufacturing, mid-1950s. Brightly lithographed sheet metal toy gun, made using a mold similar to the Buck Rogers Pop Pistol from the 1930s. 7 1/2". Oxidation on unpainted areas, general scuffing and wear related to use. Not working. Good.

100/200

125. **Set of Two Nu-Matic Paper Popper Guns.** Chicago: Langston Manufacturing Co., ca. 1940s. One of the first toy guns designed to make a "pop" without the use of caps., these are both later red models. Metal toy gun with holder for paper shots attached to barrel. One toy includes paper shots. 7" long. General areas of oxidation, paint scratches and scuffs. Not working. Fair.

100/200



120



121



122



123



124



125



126



127

126. **Sheriff's Toy Gun.** USA: J. Chein and Co., 1950s. Brightly colored tin litho toy gun with two red transparent plastic pieces showing area where gun would produce sparks. General oxidation and scuffing, some dents, one red plastic piece partially broken, missing top blue slider. Working intermittently. Fair.

50/100

127. **Smoke Ring Toy Gun.** Beverly Hills, Calif.: Nu-Age Productions Inc., ca. 1950s. Gray plastic and metal smoke ring toy gun. 9 1/2 x 6". Some scuffs and oxidation affecting most of trigger and patches of other metal parts. Not tested for functionality. Good.

50/100



128

128. **Strato Gun.** Detroit: Futuristic Productions Co., mid 1950s. Toy cap shooter with chrome finish, the Strato was advertised as "earth's only interplanetary automatic cap gun." 12" long. Light wear to red highlight paint. Trigger mechanism working. Excellent.

200/300



129

129. **Streamline Siren Sparkling Pistol.** New York: Louis Marx & Co., ca. 1940-50s. Friction-operated, sheet metal "Air Raid Warning Pistol" toy, including original box. When operating, toy makes a siren noise and shoots sparks. 6 1/2 x 6". Toy has some oxidation on the top open metal, and exposed metal covering siren, light small chips to paint. Box has light wear and small tears. Very good.

200/400



130

130. **Space Control Space Gun.** Japan: T. Nomura, ca. 1950s. Tin litho toy gun, one of the best known and most representative of 1950s Japanese tin ray guns. Includes box (which may be a reproduction). Bright turquoise blue with rocket ships, space men, this toy was a sparking pistol. 4" long. Light scratches on litho, light oxidation on trigger. Trigger does control action, however does not produce sparks. Box with light wear. Very good.

50/100



131

131. **Space Gun.** Japan: Shudo, ca. 1960s. Tin litho brightly colored space gun, friction-operated with firing noise and originally made sparks that could be seen through transparent red plastic spaces on barrel. 5 1/2" long. Light scratches and scuffs, original red plastic pieces clear and intact. Produces noise, but not sparks. Very good.

150/250

132. **Space Patrol Sparking Gun.** Japan, ca. 1950s. Small tin litho toy ray gun in original packaging. Marked "Atomic Gun" on body, creates sparks when operating. 5" long. Toy gun is near mint, packaging has some small holes and soiling to plastic, not marked with price. Not tested for functionality. Near mint.

100/200



132

133. **Space Rocket Pistol.** Japan: T. Nomura, mid-twentieth century. Tin litho toy gun with vibrant colors, makes a firing sound when operated and end lights up. Includes original box. 10" long. Very light scratching, small amount of oxidation around light cover. Box has some tears with losses, some creases, and light soiling. Working very well. Very good.

200/400



133

134. **Space Super Jet Gun.** Japan: KO Toys, mid-twentieth century. Friction operated toy gun with both tin litho and plastic components. Including original box with the phrase "Non toxic colors - safe - harmless". 9 1/2" long. Toy is scuffed and litho is scratched in a few places, light oxidation on trigger. Box is torn in a few places with losses, has creases. Very good.

100/150



134

135. **Super Nu-Matic Jr. Repeater Paper Buster Gun.** Chicago: Langson Manufacturing Co., ca. 1951. Mint in original packaging. With four original paper rolls, this red toy gun has instructions on packaging as well as the claim "Harmless!" Toy is 6", 7 1/2" including packaging. Toy is mint. Plastic on packaging is peeling at various rates at all corners, some of the plastic package is colored by age. Very good.

200/300



135

136. **Super Nu-Matic Jr. Paper Buster Gun.** United States: LM Co., late twentieth century. Toy gun in original box, "250 Shot Harmless Repeater," a drop of oil inside rubber washer is recommended by the box for use. Does not include any original shots/paper rolls. 6". Light soiling to toy and light oxidation on trigger, box is missing side flaps on two sides and has some soiling. Not tested with paper shots. Good.

50/100



136

137. **Super Site Magic Bullet Pistol.** New York: 20th/21st Century Productions Co., ca. 1950s. Plastic red and yellow toy gun with the original detailed and colorful cardboard holster. 8 1/2" long. Toy has some general play wear, holster has some water damage and light folds, but all graphics are clear of damage. Working. Good.

50/100



137



138



139



140



141



142



143



144



145



146



147



148

MODEL AND TOY TRAINS

138. **Tom Corbett Official Space Cadet Space Pistol.** New York: Louis Marx & Co., ca. 1950s. Tin litho clicker-action toy pistol with the portrait of Tom Corbett, a Rockhill Productions character, on the base. Brightly colored, including original rare box. 10 x 4 1/2". Some light scuffs on toy, oxidation spots on trigger; box has lightly worn edges with light tear from a corner and torn flap. Clicker-action working. Very good.

400/600

139. **Tom Corbett Official Space Cadet Space Pistol.** New York: Louis Marx & Co., ca. 1950s. Tin litho clicker-action toy pistol with the portrait of Tom Corbett, a Rockhill Productions character, on the base. 10 x 4 1/2". Some light scratching to litho on toy. Clicker-action working. Very good.

300/500

140. **Wham-O Air Blaster.** Woodland Hills: Wham-o Manufacturing, ca. 1960s. Black plastic toy with metal trigger, lift the top piece and press down to prime toy gun and then fire. 12 x 8 x 6". Light soiling, used condition. Working well. Good.

50/100

141. **X-100 Mystery Dart Gun.** Brooklyn, New York: Alriss, ca. 1940-50s. Red hard plastic toy dart gun in original cardboard packaging, including two darts. "Hits it's mark, leaves a mark," reads across the top, "Everything is a target!" 7 1/2 x 7" including packaging. Small tear on bottom of cardboard; toy gun and darts in unused, very good condition. Not tested for functionality.

50/100

142. **Zooka Pop Pistol.** Plymouth, Mich.: Daisy Manufacturing, mid-1950s. Brightly lithographed sheet metal toy gun, reverse colors of the "Rocket Dart Pistol," also by Daisy. 7" long. Some oxidation, general scuffing and scratches. Not working. Good.

100/200

143. **American Flyer No. 4000 Locomotive and Passenger Set.** Chicago: American Flyer Lines. Four pieces, standard gauges, including 4000 Electric Locomotive and the passenger cars Yorktown and Bunker Hill. All orange bodies, passenger cars with red window frames and handrails, Yorktown with a brass deck. Light scratching to sides, but generally excellent condition.

600/900

144. **American Flyer Inbound Freight Station.** New Haven, ca. 1930s. Vintage lithographed tin with lovely detail. Removable roof. 12 x 7 x 6". Rusted around base, else generally clean.

100/150

145. **Box Lot of Louis Marx Train Parts and Accessories.** New York, ca. 1950s. Filling a large carton, and including two locomotive engines (one Commodore Vanderbilt), various passenger, freight, livestock, and other cars, signals, a quantity of lines of track (straight, curved, crossing), a bag of transformers, electric switch set, and other parts, in generally good condition.

200/300

146. **Box Lot of American Flyer Train Parts and Accessories.** New Haven, ca. 1950s. Including Santa Fe No. 360/364 Diesel Locomotive Set, No. 734 (Operating Box Car), No. 589 (Passenger and Freight Station), No. 4B (100 Watt Transformer), No. 532A (Crossing Gate), A-11666 (Air Chime Whistle Control), lines of track, and more. Bulk in original boxes. Generally very good condition.

150/250

147. **Lionel 421 Blue Comet Westphal Coach Car.** New York: Lionel Corp., 1930s. Prewar standard gauge coach car with brass and nickel trim. Lacking three (of eight) handrails. Scattered light rust and paint losses, but good overall.

200/400

148. **Lionel 422 Blue Comet Tempel Observation Car.** New York: Lionel Corp., 1930s. Prewar standard gauge observation car with brass and nickel trim. Both sides with handrails and single steps. Scattered light rust and paint losses, but very good overall. 18 x 5 1/2 x 3".

200/400



149



150



151

149. **Lionel Union Pacific F3-A Powered & Dummy Locomotive Units (6-8480).** Lionel Corp., 1982. Beautiful yellow-bodied set of locomotives in manufacturer's box. Excellent.

200/300

150. **Group of Five Lionel Electric Train Cars In Boxes.** Lionel Corp., 1980s. Including Union Pacific Vista Dome Car (6-19121); Union Pacific Smooth Side Dining Car (6-7210); Union Pacific Placid Bay Passenger Car (6-9548); Union Pacific Ocean Sunset Passenger Car (6-9549); and Union Pacific Observation Car (6-9547). Generally as-new in original boxes with packaging.

150/250

151. **Lionel Dispatcher Board 334.** U.S.A.: Lionel, 1957. Lionel Dispatcher for trains, manufactured for only one year and sold for three years, includes original box and packet with parts and instructions for operation. 10 x 4 x 7 1/2". Toy is near mint, not tested for functionality (requires specific voltage for proper operation), box has a few stains and light edge wear. Excellent.

200/300



152



153

152. **Lionel Electric Trains.** USA (Chicago, New York): The Lionel Corporation, mostly pre-WWII, with some later accessories. With over 140 pieces this collection includes three engines (all model 2055 (post-war: ca. 1953), one in original box), manual switch boards, transformers, many track pieces, wheel/axel/hubcap accessories, stop lights, railroad crossing, wiring and lockon pieces, and train cars. Cars in this lot have model numbers 1690, 1682, 1691, 1679, 1680, and 1689; there are multiples of each of these, some with different hubcap colors. Complete list of items available upon request.

600/900

153. **Honeymoon Express.** New York: Marx Toys, ca. 1940s. Tin litho wind up toy. When operating, train circles perimeter, going beneath two underpasses and over a "bridge." 9 1/2" in diameter. Light scratches and small spots of oxidation. Very good.

50/100

BATTERY-OPERATED AND OTHER TOYS

154. **Ball Playing Dog Toy.** Japan: Linemar, 1950s. Battery operated. Litho tin and fabric. 8 3/4" high. Working. Very good.

100/200

155. **Balloon Blowing Monkey.** Japan: Rock Valley Toys, ca. 1950. Battery operated toy. Litho tin base, cloth and fabric body. Monkey inflates a balloon. Red overalls. 11" high. Working. Very good, missing balloon.

100/200

156. **Blacksmith Bear Toy.** Japan: 1950s. Battery operated toy. Litho tin and fabric. 9" high. Minor wear to finish on base, else very good. Working.

100/200

157. **Blushing Willy.** Japan, late-twentieth century. Battery operated "Electro Toy" and box, "Actually pours from the bottle and drinks in perpetual motion. Face reddens in blushing action, Hair stands up, Eyes rolls." 10 1/2" tall. Some light scratches to paint, glue visible where hair is attached. Box had worn edges with some light tears. Not working. Good.

50/100

158. **Bubble Blowing Washing Bear.** Japan, marked "Y," mid-twentieth century. Battery-operated with fabric components. 7 x 4 x 8". Light scratches to litho, light soiling on fabric. Working, not tested with any fluid. Very good.

50/80

159. **Busy Housekeeper Bear.** Japan, mid-twentieth century. Battery-operated toy bear with vacuum. Moves around and lights up the vacuum light when operating. 9" tall. Some soiling on vacuum base. Working. Very good.

100/150

160. **Champion Weight Lifter Toy.** Japan: Yano Man Toys, 1960s. Battery operated. Plastic, fabric and hard rubber/vinyl face. With original box (scuffed). 9 1/4" tall. Working. Very good.

150/250



154



155



156



157



158



159



160



161



162



163

161. **Chein Disney Roller Coaster Set With Two Cars.** Lithographed tin wind-up set, the exterior of the track decorated with amusement park scenes. With two wind-up cars made in Western Germany. 19 x 10 x 8". Minor rust and paint losses, tracks bent in parts, but good overall.

150/250

162. **Circus Lion.** Japan: Via Rock Valley Toys, ca. 1950s. Tin litho battery operated toy of a circus lion on his pedestal, when operating he stands up and roars. In original box. Includes original base blanket. 6 1/2 x 10". Light scratches to paint, light soiling to fabric areas. Box has some tears and color fading. Working. Very good.

80/100

163. **Dancing Bear.** Early twentieth century. Tin litho wind toy of a dancing bear in modern stand, including wind key. Bear moves arms and legs when key is turned. 6 1/2" without stand. Oxidation spots, peeling paint, especially on face. Good.

400/600



164



165



166

164. **Dentist Bear.** Japan: S&E, ca. 1950s. Battery operated toy with a tin litho base, a bear "dentist" with a light-up hand drill stands next to a crying baby bear in chair. 6 1/2 x 3 1/2 x 10". Some scratches and oxidation related to paint, dentist bear missing right hand which usually holds drill and has some crazing on left rubber hand. Working. Good.

150/250

165. **Doctor Doolittle & Polynesia The Parrot.** United States: Mattel, 1967. Set of bendable and poseable characters from the popular film. 8" tall. Mint in box, factory sealed.

50/80

166. **Fishing Panda Bear.** Japan: Alps, mid-twentieth Century. Battery operated toy that "fishes" using magnetic "lure" with box, includes three little tin fish. Hat has been replaced. Includes original "Caution" message. 10 1/2" tall. Battery box has some corrosion, tear in fabric on one arm. Box has light wear, oxidation around staples. Not working. Good to very good.

100/200

167. **Frankenstein.** Japan: T.N., mid-twentieth century. Battery-operated toy with tin litho base and vinyl and cloth parts. 5 1/2 x 4 x 12". Some soiling to vinyl areas. Not working. Good.

80/150

168. **Gino Neapolitan Balloon Blower Toy.** Japan, Rosko, 1950s. Battery-operated. Lithographed tin and vinyl, with original box (soiled but intact). Includes parts and instructions. 10 1/2" high. Very good.

100/200

169. **Good Time Charlie.** Japan, mid-twentieth century. Battery operated tin litho toy with plastic and cloth components. 12" tall. Soiling on the cloth and plastic. Not working. Good.

100/200

170. **Hootin Hollow Haunted House.** New York: Marx Toys, ca. 1950s. Battery operated tin litho toy with side keys that cause a variety of mechanical and battery powered responses. 8 1/2 x 6 x 11". Light soiling, some scratches with oxidation spots. "Ghost at the window" and "Front door" mechanical keys not functioning. Battery components not tested. Good.

300/500

171. **Hopalong Cassidy Shooting Gallery.** USA: Automatic Toy Co., ca. 1950s. Mechanical shooting gallery made mostly of lithographed tin. Includes original gun and targets. Approximately 18 x 7 1/2". Some light scratches to tin, gun is detached. Good.

50/100

172. **Hubley Road Scraper.** Lancaster (Pennsylvania): The Hubley Manufacturing Co., ca. 1950s. Diecast toy road scraper with original box (No. 481), steering is articulated and scraping "blade" is mobile. 10" long. Toy is near mint, box has some tears and wear to edges. Excellent.

100/150

173. **Jocko the Drinking Monkey.** Japan: Linemar, ca. 1955. Battery operated tin litho toy with fabric coverings, eyes light up and Jocko pours himself a drink and takes a gulp. 10 1/2" tall. Some scratches to paint and oxidation, soiling to fabric, battery box doesn't stay closed. Working. Good.

100/200

174. **Jolly Bambino.** Japan: Rock Valley Toys/Alps, ca. 1950s. Battery operated tin litho toy with fabric components, monkey squeaks, kicks his feet, and eats from his hand when operating. 9 1/2" tall. Light soiling to fabric, missing covers to feet of chair, and wear to "fur." Working. Good.

100/150



167



168



170



169



171



172



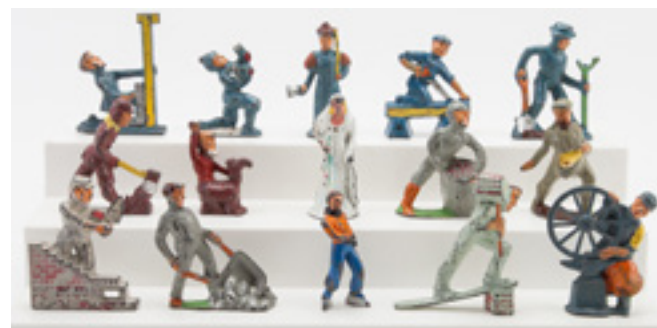
173



174



175



176



177



178

175. **Jumbo the Bubble Blowing Elephant.** Japan, mid-late twentieth century. Battery operated toy elephant that blows bubbles from cup, includes cup and original bubble solution in packaging as well as original box. 7" tall. Box has some folds, and light soiling. Not working, otherwise excellent condition.

100/200

176. **Lot of 15 Barclay Manoil Toy Figures.** American, ca. 1910s. Lead toy figures, predominantly occupational examples. Light to mild paint loss.

50/100

177. **Marx Merry-makers Band.** New York: Louis Marx, ca. 1929. Lithographed tin wind-up toy. Features four mice, two in band, one dancer, one seated conductor on top of piano. 9 x 8". Working. Good.

500/600

178. **Mickey the Magician.** Japan: Linemar Toys, mid-twentieth century. Battery-operated toy including box with bright tin lithography, Mickey stands and moves a hat up and down producing and vanishing a baby chicken. Includes original baby chick. 7 x 5 1/2 x 10". Crazying on both rubber hands, some paint scratches. Box has light wear on corners and light discoloration in small areas. Not working. Good to very good.

1,000/1,200

179. **Miss Friday.** Japan, mid-twentieth century. Battery operated tin litho toy with some plastic components. Miss Friday works on her typewriter and has a fold out desk. 4 1/2 x 5 x 8". Some hairs askew, soiling on arms and neck, hair tied with a piece of yarn. Not working. Good.

100/150

180. **Noah's Ark.** Walt Disney Productions, ca. 1940s. Paper/cardboard toy in original box, box advertises "Fun Galore!" with "Noah, Ham, Shem, Japhet, and over 100 Animals." Includes original paper animals in their original punch sheets (none removed), with figures from popular Disney films like the owl from *Bambi* and the cricket and donkey from *Pinocchio*. Box is 19 x 7 x 7". Toy is in unused condition, some oxidation on staples. Box has some folds, soiling, and edge wear.

200/300

181. **Nutty Mad Indian.** New York: Marx & Co., Inc., ca. 1964. Tin litho, fabric, and plastic stereotyped depiction of a Native American; battery-operated toy with original drum head. 12" tall. Light soiling to fabric areas, corrosion to the battery box. Not working. Good.

100/200

182. **Nutty Nibs.** Japan: Linemar Toys, ca. 1950s. Battery operated tin litho figurine of a "native" African person throwing "nuts" into his mouth. Includes steel balls. 12" tall. Some fading to plaid skirt. Working. Good.

200/300

183. **Oh My Toy.** Germany: Lehmann, 1930s. Wind-up clockwork toy. 10" high. Scratches and wear; good. Working.

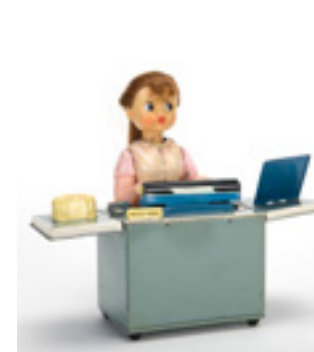
200/300

184. **Peanut Vendor Bear.** New York: Cragstan, mid-twentieth century. Tin litho toy of a bear pushing a peanut cart. 8 x 5 1/2 x 9". Not working, otherwise excellent condition.

100/200

185. **Pinky the Juggling Clown.** Japan: Alps, 1950s. Battery-operated toy with tin litho, fabric, and vinyl parts. When operating, nose attachment spins and makes noise while a red ball is "juggled" between open hands. 10" tall without spinning nose attachment. Scratches to tin litho, some light soiling to vinyl and cloth. Working. Good.

100/200



179



181



180



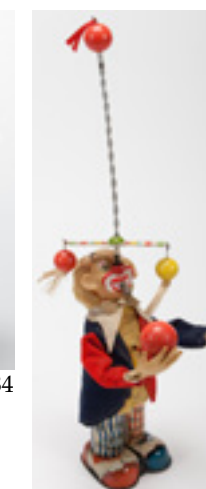
182



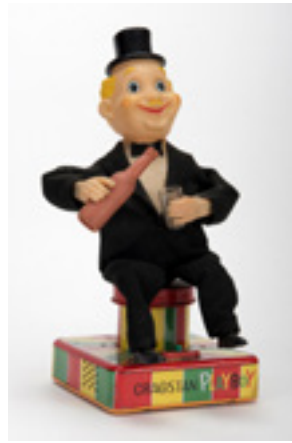
183



184



185



186



188



189



187



190



191



192



193



194



196



195



197

186. **Playboy Toy.** Japan: Cragstan, 1950s. Battery operated toy. Litho tin base, fabric, and vinyl head. Playboy drinks from a bottle. 13 ¼" high. Very good. Working.

100/200

187. **Popeye Lantern.** Japan: Linemar Toys, mid-twentieth century. Battery operated tin litho toy lantern with arms that swing up as a handle. In original box. 7 ½" tall. Light oxidation on edges of hands, some fading to color on chin, general light paint scratches. Box has water damage, paint marks, and a tape-repaired tear. Working. Good.

300/400

188. **Rabbits and the Carriage.** Japan: S&E, mid-twentieth century. Tin litho battery operated toy with a mama rabbit pushing a baby rabbit in a carriage. In original box. 8 x 10". Some light soiling to "fur" and cloth areas, light scratches to paint. Box has some tears repaired by tape, soiling, and worn edges. Working. Good.

50/150

189. **Roaring Tiger.** New York: Marx Toys, ca. 1963. Battery operated prowling Bengal tiger with controller that walks and roars when operating. 17" from tip of tail to nose. Vibrant color with whiskers and all wheels intact, controller does not stay closed when batteries are loaded, light scraping and oxidation on controller. Working well. Very good.

50/100

190. **Shooting Bear.** Japan: SAN, mid-twentieth century. Tin litho bear toy, battery operated by controller, when operating the bear walks, eyes light up, and he raises and lowers the gun. 10" tall. Boots scuffed and some soiling to fabric. Working well. Good.

150/250

191. **Sleeping Baby Bear.** Japan: Linemar, ca. 1950s. Battery operated toy tin litho base and attached fabric. Original alarm clock and rubber hands attached. 9 x 4 x 7". Light scratches on removable alarm clock. Not working. Very good.

100/150

192. **Sleeping Snow White Dwarf "Happy".** Japan, mid-twentieth century. Tin litho toy with fabric coverings. Sleeping "Snow White and the Seven Dwarves" character with a plastic bird on headboard. 9 x 4 ½ x 5". Crazying and soiling on original rubber hands, some soiling to fabric areas, faded paint on bird. Not working. Good.

100/150

193. **Snake Charmer.** Japan: Linemar Toys, ca. 1960. Tin litho toy with fabric coverings of a snake charmer that bobs back and forth while playing his instrument for the snake in the basket. Original basket and snake. 7 x 4 x 8". Some soiling on fabric, some scratches to paint on charmer's face. Working. Very good.

200/300

194. **Traveling Dog.** Japan: Alps, 1950s. Tin litho with fabric and rubber parts, battery-operated. Suitcases in cart serve as the battery case. 10 x 10". Some small areas of oxidation on cart. Working. Very good.

100/200

195. **Two Vintage Japanese Circus Toys.** Including a wind-up Giraffe Circus Car (KO, ca. 1960s) and a sealed Lucky Toy Circus Truck (1990s). Both very good.

50/100

196. **Unicyclist Clown.** Japan: Modern Toys, mid-twentieth century. Battery operated cycling clown with tin litho base, light up balls in his hands, and moving appendages. 12" tall. Some soiling to fabric and rubber areas, light paint scratches. Working well. Very good.

200/300

197. **Walking Elephant.** Japan: T.S., mid-twentieth century. Battery operated toy that walks and bobs its trunk up and down when operating. 7 x 5 ½". Soiling to fabric "fur" covering, some chipping to paint on the controller. Working. Good.

50/100



198



203

198. **Walt Disney Character Xylophone.** New York: Tudor Metals Products Co., 1950s. Tin litho and other metal parts, includes one wooden mallet, "Color-Keyed Songs" booklet, and original box. Measures 13 x 6 1/2 x 5" in box. Box has some soiling, tears, and folds; song booklet has some soiling and scrapes on cover art; xylophone has light wear to litho on corners.

50/100

199. **Doc and Dopey Pull Toy.** New York: Fisher Price, ca. 1937. Rare toy made for Walt Disney Enterprises the year *Snow White and the Seven Dwarves* was released. Wood, paint, metal, and paper litho. 12" long. Light chipping and lifting of paper litho, general light soiling related to play and use, top of drum replaced with paper. Good.

200/400

200. **Donald Duck Pull Toy.** England: Chad Valley, ca. 1940s. Wood, paint, and paper litho pull toy of Donald Duck playing a xylophone. 9 1/2" tall. Some wear to paper edges, particularly on one hand and on hat. Good.

100/150

201. **Donald Duck Pull Toys.** New York: Fisher Price, ca. 1940 and 1955. Two wooden Donald Duck toys made for Walt Disney Productions, one that makes duck imitation noises when moving. 10 x 10" and 6 x 9". General play wear, larger toy has lifting and chipped paper litho and is missing pull string. Good.

100/150

202. **Ferdinand Pull Toy.** New York: Fisher Price, ca. 1939. Wood, paint, and paper litho pull toy with articulated arm of Ferdinand from "W. D. Ent." (Walt Disney Enterprises). 10" tall. Chip to litho on articulated arm, general wear to image and paint from play. Good.

50/100

203. **Group of Three Noise-Making Fisher Price Pull Toys.** New York: Fisher Price, 1930s-1950s. Three wooden pull toys with bears that play xylophones as they go. Includes two "Teddy Zilo" toys and one "Tiny Teddy" Toy. Largest is 9 x 3 1/2 x 12". Some chipped paint, one missing pull string. All working. Good.

50/100



204

204. **Group of Six Fisher Price Push/Pull Toys.** New York: Fisher Price, 1930s-1940s. Five wooden pull toys and one push toy (with attached push handle) of various subjects. Includes two Rabbits (no. 520), Tabby Ding Dong, Circus Wagon, Popeye Spinach Eater (no.488), and Katy Kackler. Most 10" tall. One rabbit missing pull string, Tabby Ding Dong has one repainted side, Popeye missing spinach tin and one hammer, otherwise all pieces show play wear and some light soiling. Good.

250/350

205. **Mickey Mouse Pull Toys.** New York: Fisher Price, ca. 1940s. Two Mickey Mouse pull toys made for Walt Disney Productions, no. 485 and no. 476, made of wood with metal and paper litho components. 9" long and 7 1/2" long. General soiling affecting lithographed paper, one significant chip to paper on "Choo-Choo" toy, both affected by wear related to play and use. Good.

150/200

206. **Mickey Mouse Xylophone Pull Toy.** New York: Fisher Price, ca. 1942. Scarce Mickey Mouse (798) pull toy made of wood with lithographed illustration, metal noise-making "xylophone" with articulated arms that play the instrument, and original pull string. Litho has some light soiling, and a few chips. Good.

150/200

207. **Pinocchio Pull Toys.** New York: Fisher Price, 1939. Two Walt Disney Enterprises wooden pull toys of the Pinocchio characters. "Pinocchio Express" shows the faces of Geppetto, Jim Cricket, and Kitten on wagon; also includes Pinocchio riding a donkey (no. 494). 11" long and 8" long. Lithographed paper chipping, general soiling and wear related to play and use. Good.

200/300

208. **Flip the Frog Stuffed Velvet Doll.** Circa 1930s. Stuffed pale green velvet with black head markings, ribbon waistband, button eyeballs internally affixed with chain. 7" tall. Not jointed. Tightly sewn, light scuffing, right eyeball slightly sprung outward.

150/250



205



206



207



208



199



200



201



202



209



210



211



212



213



214

209. **Mechanical Performing Bear Toy Playing Cymbals.** Likely European, first quarter twentieth century. Attractive antique standing grizzly bear figure with a soft and dark fur body, silk vest piece, and brass chain muzzle, whose internal aluminum framework causes the cymbals to clash together by hand operating a lever near the top of the left leg. The figure's arms swing out to a nearly eight-inch wingspan. 8 1/2" tall. Minor fur loss at head and foot.

300/500

210. **Wind-Up Antique Mechanical Dancing Bear Toy.** Circa first quarter twentieth century. Standing bear with beautiful original honey-color faux fur body, with wind-up mechanism causing the head to bob side to side and both arms up and down while vibrating all over. 8 1/2" tall. Working, with an unobtrusive short seam tear at neck. Very good.

150/250

211. **Antique Multi-Color Mohair Teddy Bear.** Circa first quarter twentieth century. Jointed bear figure with soft mohair body in brown and orange hues, with cloth foot and hand pads, and green and black glass eyes. 15" tall. Very good.

100/200

212. **Antique Red Mohair Teddy Bear.** Circa first quarter twentieth century. Jointed bear figure with a beautiful reddish-brown mohair body, cloth foot and hand pads and snout, glass eyes, and floppy right ear. 13" tall. Very good overall.

100/150

213. **Group of Five Antique Teddy Bears.** Circa first quarter twentieth century. Mohair, wool, and other fabric. All jointed, with glass eyes. The largest being 14" tall, with a ringing bell internally. Light to mild wear including a few brittle joints, but very good as a group.

300/400

214. **Steiff Rocking Bear with Wheels.** Germany: Steiff Knopf Im Ohr, ca. 1980s. Made of woven fur with metal rocker and wheels attached, includes original Steiff tags, both on ear and with care and cleaning instructions (printed in German, English, and French). Approximately 22 x 16 x 10". Excellent unused condition.

150/250



215

215. **Collection of Vintage Doll Eyes.** Possibly German, early to mid twentieth century. Twenty-one pairs of doll eyes, tin and glass, most with original weights and eyelashes. Various skin tone eyelids and various colored irises. Sizes vary, eyes ranging from 1/4" in diameter to 1". Fair to good condition.

200/400

216. **Tim Corbett Space Cadet Lunchbox with Thermos.** Nashville: Aladdin Industries and Rockhill Radio, 1954. Lithographed tin, plastic, and aluminum. Vibrant pictorial panels depict spacemen, rocket ships, and, on rear, the Solar System. Thermos included, nestled in the internal hinged metal bracket. Blue handle. "Good Housekeeping" and "Parents' Magazine" commendation sticker on side. 8 x 7 x 4". Minor losses and scratching at corners, some scratching internally, but a fine and bright example overall.

500/700

217. **Cragstan Yoshiya Flying Saucer with Pilot.** Japan, ca. 1960. Lithographed tin, plastic, and rubber toy, battery-operated, with pilot in bubble compartment. Restored coil antenna and white tips, general light wear to finish. 8 x 8 x 5". Working.

150/250

218. **Early Chein Dump Truck.** New York, ca. 1930s. Two-color tin dump truck with lever and stand operating the bed. 8 1/2 x 4 x 3". Age-consistent oxidation, very good structurally.

100/150

219. **Japanese Tin Wind-Up Convertible.** Circa 1950s. Blue convertible with yellow interior and driver in hat, license plate reading "MM-19-56." With wind key, mechanism operating. 7 x 3 x 2". Structurally sound with mild oxidation and scratching.

100/150

220. **Battery-Operated Electric Cable Train in Box.** Japan: T.N., ca. 1960s. Lithographed tin toy, mint in labeled box, with accessories. 7 1/2 x 6 x 2 1/2".

50/100



216



217



218



219



220



221



222



223



224



225



226



227



228



229



230



231

221. **Radicon Remote-Controlled Bus with Box.** Japan: Modern Toys, 1950s. Gray-bodied tin bus with purple-shaded windows, including remote, instruction manual, and antennae, neatly stored in the original pictorial manufacturer's box. Remote control allows user to change the direction of front set of wheels. Box sides splitting, lightly soiled, but toy and parts near mint.

400/600

222. **Fisher Price Space Blazer Pull Toy.** East Aurora: Fisher Price, ca. 1953. Painted and decaled wood, plastic, aluminum, and wire, with drawstring. Serial Number 750. Hallmarked by the manufacturer twice. 14 x 5 x 2". Very good.

200/300

223. **Spirit of St. Louis Model Airplane.** Metalcraft, 1920s. Pressed steel model airplane on wheels, with propeller. 11 x 14 1/2 x 3". Age-consistent rust and oxidation, else very good.

100/150

224. **Japanese Police Patrol Helicopter.** Japan: S&E, ca. 1960s. Friction-powered toy, lithographed tin, rubber, and plastic, inner compartment with two pilots and detailed dashboard. Removable propellers. Number 5527. 11 x 4 x 2". Good.

100/150

225. **Lot of Four Vintage Toy Trucks.** Japanese and American, ca. 1940s - 50s. Including a Texas Cattle Round-Up truck with cattle pieces, a red No. 452 Hubley stake truck; a Japanese logging truck; and a Courtland circus truck with rotating animal drum. Condition generally very good.

200/300

GAME SETS AND KITS

226. **American Model Builder.** 1913. American Model Builder No. 4, in box, with original instructions. Box has wear and the sides of top cover missing and damage to top litho and edges. Not checked for completeness but has two levels of pieces, with most compartments full. Good.

50/100

227. **Bambino Baseball Game.** Chicago: Johnson Store Equipment Co., ca. 1933. Tin litho game sold at the World's Fair in Chicago, this game was made using Babe Ruth's name and the company responsible surprisingly was not sued at the time for this use (they were not affiliated with Babe Ruth other than producing this game). Includes original score sheet pad (one page used), mini baseball, baseball stand, and bat. Missing small figurine markers. 12 x 14". Some small areas of oxidation, light soiling. Good.

100/150

228. **Brownie Target Ball Game Set In Box.** Jeanette, Penn.: M.H. Miller, 1920s. Tin lithographed game board with attached catapult, game ball return slide attached underneath. Minor dents at edges, with original box (well worn) and full set of five wooden balls. 15 x 8 x 2".

50/100

229. **Collection of "Pigs in the Clover" Style Games.** Various makers and dates. A collection of nine vintage one-person games where the object is to manipulate metal balls or other pieces into targets on a board. Most contained within boxes that have glass covers, boxes made out of wood, metal, or cardboard. Largest is 8 x 8", smallest is 2 1/2 x 3 1/2". Some light soiling, worn corners, generally in played condition.

100/200

230. **Comet Flying Scale Models.** Set of five Comet Flying Scale Models including Kit Y10:129 Piper Club, Kit Y1:129 No. American Mustang P51, Kit Y14:129 Aeronca Chief, Kit Y5:129 Lockheed Lightning P-38, and Kit Y3:129 Republic Thunderbolt P47. All boxes are the "Coke Bottle" design where a bottle of the drink is featured in the image of a child building a model. Each kit seems mostly complete: a few decals used, "Comet Dope" bottles empty in a few cases, missing cement. Mostly unused state, all in original boxes measuring 21 x 5 1/2". Very Good.

150/250

231. **Cuebridge Bowling Game.** England: Spears Games, ca. 1930s. Boxed game with paper and wood "bridge," marbles, and cue stick. Marbles are shot under the bridge in a similar to how pool is played. The box illustration caption reads, "Granny having the first shot." Box measures 11 x 4". Some wear to edges and corners of box. Very good.

50/80



232

232. **Disney's Mickey Mouse Talkie Jecktor and Accessories.** Walt Disney Studios, ca. 1930s. Includes speaker, original box, original record ("Mickey Mouse Presents Silly Symphony in The Idle Hour Club"), six "movie jecktor films" in partial original box (Homerun Mickey, No. 20 The Funny Bunnies, No. 15 The Idle Hour Club, No. 15 The Sandman, No. 15 Penguin Land, Dude Ranch), one unboxed "movie jecktor film" (Pioneering), as well as six more recent Disney records (The Official Mickey Mouse Club Pledge, Donald Duck at the Opera, Hark! The Herald Angels Sing, Pluto and His Phonograph, Official Mickey Mouse Club March, and Mickey Mouse Newsreel Music). Talkie Jecktor measures approximately 13 x 6 x 5 1/2". Not tested for functionality. All pieces are in good to very good condition.

400/500



233

233. **Disneyland Melody Player.** New York: J. Chein Co., ca. 1950s. Tin litho music player made for Walt Disney Productions. When operating, air is blown through holes in paper music roll, creating a melody. Includes one song roll. 7 x 6 1/2 x 7". Light scratches to litho with some wear particularly on corners. Working. Very good.

50/100



234

234. **Mickey Mouse Club Mousekaphone.** Connecticut: Gong Bell Manufacturing Co., 1950s. Tin litho with paper and woven cord components, includes original box. Made for Walt Disney Productions. Box measures 8 x 7 x 3 1/2". Toy is in excellent condition with very light scratching to paint on phone dial. Box has multiple folds, areas of significant discoloration, and multiple tears.

150/200

235. **Mickey Mouse Wrist Watch.** Little Rock (Arkansas): Ingersoll and United States Time Corporation, Timex; ca. 1960. A small size wrist watch made for the Walt Disney franchise, in box, missing lens. Also includes a vintage toy car with Mickey figurine. Box is 4 x 7". Includes original instructions and guarantee. Light soiling on box. Very good.

80/100



235



236

236. **Snow White and the Seven Dwarves Bisque Figurines.** Japan: Distributed by George Borgfeldt & Co. (New York), ca. 1938. Made the year after the Disney film was released, this set includes the larger sized figurines in original box (missing box lid). Box is 10 x 16," largest figure (Snow White) is 8" tall. Some light paint chipping and soiling on the figurines, box has some peeling paper and faded colors.

100/200

237. **Electric Tank Battle.** New York: Gotham Pressed Steel Corporation, ca. 1960. Made of lithographed pressed metal, the base for this table top game vibrates when in operation. Includes 8 tanks, two HQ flags, an American flag, and two canons, and original box. Game board is 28 x 15". Game is in very good condition, not tested for functionality. Box has some soiling, neon paper applied, pin holes, light tears, and some paint.

100/200



237

238. **No lot.**

239. **Group of Three Vintage Board Games.** Parker Brothers, Lord & Freber, and McLaughlin Bros.; 1965, 1953, 1890. Includes "Charlie Brown's All Stars," "Line Drive," and "Fish Pond." Games in original boxes, largest measuring 21 x 12 1/2". Games mostly complete, boxes good except for "Fish Pond." Top detached from lid, colors faded, some soiling.

100/150



239

240. **Group of Six Vintage Baseball Games.** Various dates and publishers. Includes "Baseball: Strategy" (Avalon Hills, Baltimore), "Bible Baseball" (Standard Publishing, Cincinnati, 1993), "Spin-A-Game: Baseball Game" (Hasbro, USA), "De Luxe Rookie" (Klauber Games, Chicago), "Major League Baseball" (Nemadji Game Company [Negamco], Minnesota, 1959), "All-Star Baseball Game" (Mr. Fun Cadaco, Chicago). Various sizes, largest being 19 x 13". All games include original boxes except "Spin-A-Game" and seem to be complete. Some boxes have worn edges. Good.

50/100



240

241. **Group of Six Vintage Games.** Various dates and publishers. Includes "The Elite Conversation Cards" (McLaughlin Bros., New York, 1887), "Mrs. Casey Wants To Know" (Parker Brothers, USA), "Peter Coddle's Trip to New York" (Parker Brothers, USA), "Game of Rex" (J. Ottmann Litho, New York), "The Comical Game of 'Who?'" (Parker Brothers, USA), and boxed set of wooden blocks. Various sizes, largest being 10 1/2 x 9" All games are in original boxes and seem complete. Boxes show wear, particularly on edges. Good.

50/100



241

242. **Group of Six Vintage Games.** Various dates and publishers. Includes "Magnetic Jack Straws" (Milton Bradley Co., Massachusetts), "Jumbo Ring Toss" (Rosebud Art Co., New York, 1940), "Bull in a China Shop" (Milton Bradley Co., Massachusetts), "Lucky Shot" (Whitman Publishing Co., USA) "Elm Hills Golf" ("Pat" Maffeo, Connecticut, 1946), "The Dwarfs' Twirling Game" (Rosebud Art Co., New York). Various sizes, largest being 12 x 12". All in original boxes. Boxes show wear, some soiling. Good.

50/100



242



243

243. **Group of Six Vintage Games.** Various dates and publishers. Includes "Ot-O-Win Bowling Alley" (O. A. Drengwitz Co., Pennsylvania), "Winko Baseball," "Black Beauty" (Milton Bradley Co., Massachusetts), "League Baseball," "Epoch's Baseball Game," and "Tiddley Ring Game." All include original boxes, but games may not be complete. Largest is 20 x 13". Boxes are in poor condition, in most cases soiled and collapsed.

50/80



244

244. **Group of Vintage Sports Games and Other Board Games.** Including Howdy Doody's Bowling (1950), Jack Banning's Putt-Pins (1950s), Jim Prentice Electric Baseball (1940s, complete but not tested), Swing-Pin: The Swing is the Thing (1950s), Table Croquet (1930s), Baldwin Basketball (1930s), Bradley's Hazards (1930s) Tick Tock and Ring Toss (n.d.), Baseball: Manage Your Own Team (n.d.), Zellophone (n.d.), a vintage set of juggling hoops, Big League Baseball (1966), Baseball All-Stars (1997), and a Spares & Strikes Bowling Alley (1940s). Condition generally good or better.

200/300



245

245. **Keystone Shooting Frontier Set No. 823.** Boston: Keystone Manufacturing Co., ca. 1950s. Play set of a frontier scene with cow boys, Native Americans, stage coach, various scenic pieces, a buffalo, an army ranger, cabin, fencing, and a toy gun. Box is approximately 26 x 12 x 5 1/2". Box has tears and folds (some repaired by glue), toys are in very good condition, toy gun has some oxidation on muzzle. Over all, very good.

100/150



246

246. **Nicolas' Puff Billiards.** Paris: J.A.J., mid-twentieth century. Vintage puff billiards game including table top board made of mahogany, four puffers, and their swivel fixtures. Board approximately 30" diam. Some light scuffs to wood and scratches, general edge wear on box. Very good.

200/300



247

247. **Pla-Ball (Play-Ball).** Birmingham, Mich.: Pandora Products Company, ca. 1920. Game in original box with baseball graphics on the sides. 31 x 10 x 10". Box has some wear and soiling, game inside packed with newspapers. Good.

50/80

248. **Two Cases of Vintage Japanese Dexterity Puzzles.** Japan, ca. 1940s. Full manufacturer's sets, each case with 144 pieces featuring Disneyesque characters. Color illustrated cardboard and plastic with metal balls. A few examples damaged at edges from handling, else fine.

300/500



248

249. **Collection of Miscellaneous Vintage Toys, Trading Cards, and Other Items.** Various dates and makers. Includes a Bull Dog cap gun and four boxes of Kilgore Bang Caps, miniature metal Old Fashioned Locomotive and Three Carriages in original box, set of 28 Canadian National Wildlife Federation Brook Bond cards, Rama Hindu Incensebox with six incense cones, Pop Pop Boat (Japan), two Chinese finger traps, a kazoo, four whirligigs, two calligraphy pens, and more.

100/200



249

250. **Antique French Game Set.** Paris: Unis, late nineteenth century. Paper-covered wooden box with chromolithographed game boards, and wooden and bone game pieces including cones, dice, number markers, and picks. Box 15 x 11 x 6" overall. Generally good condition. Not checked for completeness. Sold with two antique newspaper game boards (one in color) from the *Philadelphia Press* (1907) and *New York Journal* (1902).

250/350



250

251. **Chasse au Loup, Jeu des Quatre Souris.** France, ca. 1930s. Two small boxed French table-top games with illustrated boxes. 6 x 7" and 5 1/2 x 5 1/2". Both have wear to the box edges and some tearing at corners. Very good.

50/100



251

252. **Chess Set.** Vintage carved wood chess set with cardboard and paper board. Set is complete, this lot also includes a checkers board and a box for chess pieces. Tallest pieces are approximately 2 3/4". Light wear on box edges, board has wear at center crease and light water damage to one corner, pieces are in very good condition.

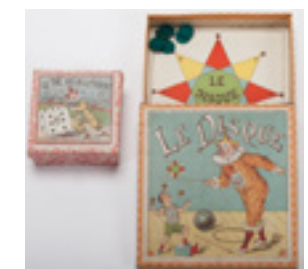
50/100



252

253. **Le De Recalcitrant, Le Disque.** France, ca. 1930s. Two small boxed games each with its own puzzle to solve, includes original colorful packaging with illustrations. 5 1/4 x 5 1/2" and 3 x 3". All pieces included, Le De Recalcitrant has broken glass cover.

50/100



253



254



255



256



257



259



258



260

254. **Dominos.** Lot of vintage dominos made of bone, wood, and small metal pins, with red box. Lot includes 28 dominos and one bone center piece. Each piece measures approximately 1 1/2 x 1". Some with light soiling on a few pieces. Corners show some light wear on box. Very good.

50/100

255. **L'Embaras du Brigadier, Jeu des Manifestants.** France, ca. 1930s. Two small boxed French games for individual players, "nouveau casses tetes." Includes colorfully illustrated boxes. 5 x 5" and 3 1/4 x 3". Boxes worn with some edge tears. Very good.

50/100

256. **Jeu de Foot Ball.** France, ca. 1930s. Boxed soccer game with a dynamic illustration on the lid, includes game board and original dice. 7 x 9 1/2". Some scuffing on box very lightly affecting illustration. Very good.

100/150

257. **Jeu Des Araignes et de la Mouche.** France, ca. 1930s. "Game of the Spiders and the Fly" in original box. 8 1/4 x 4". Light soiling on box and some tears at corners. Very good.

50/80

258. **Le Kohinoor, l'Anneau Nuptial.** France, ca. 1930s. Two boxed games, one for two people that involves placing colored triangles, and another for one person, described as a "game of skill" as you move a ring from your palm to your finger with one hand. Both include colorfully illustrated boxes. 6 1/2 x 5" and 3 1/2 x 3 1/2". Light wear on boxes. Very good.

50/100

259. **Mon Cousin Tireliboudin, Jeu de la Puce, Porte-Veine Jeu Amusant.** France, ca. 1930s. Three French language games, two with wire puzzles, the other involving chips and a wooden cup. Each includes box with illustrated lid. Largest is 5 x 4". Largest box has widespread scuffs to texture and color, the other two have light edge wear and some corner tears.

80/125

260. **Le Moulin Rouge, C'est a Prendre ou a Laisser.** France, ca. 1930s. Two boxes for French one-person games, Moulin Rouge includes the game pieces, the other does not. 4 x 6" and 3 1/2 x 3 1/2". Some light wear on box edges, some tears at corners, chipping on illustration paper. Good.

50/80

261. **A Travers le Sahara.** France, ca. 1930s. Boxed French game for one or more people, with the objective of getting around the oasis unharmed, "A charming game of skill". 7 x 5". Light chipping to lid illustration paper not affecting image, light tearing at box corners. Very good.

100/150

BANKS

262. **Aunt Jemima Toy Bank.** American, early twentieth century. Cast iron toy bank shaped as the character Aunt Jemima. 5 1/2" tall. Some wear and oxidation, no paint evident. Very good.

50/80

263. **Bear Toy Banks.** Early twentieth century. Two bear-shaped cast iron toy banks painted red and metallic gold. 6" tall and 3" tall. Chipping paint and oxidized areas. Good.

50/100

264. **Constable Toy Bank.** Early twentieth century. Constable caricature cast iron bank with billy club and slightly askew hat. 6" tall. Paint chipping, significant areas of oxidation. Good.

50/80

265. **Creed Moore Cast Iron Bank.** Connecticut: J. & E. Stevens Co., ca. 1877. Original cast iron toy bank of a soldier aiming at a tree. 10 x 7". Paint is worn and faded but is original, soldier's left foot is missing. Good.

100/200

266. **Double-Faced Toy Bank.** American, early twentieth century. Cast iron toy bank with the same face on front and back. Painted in metallic colors. 3 1/2" tall. Some chipping to paint, areas of oxidation. Good.

50/100

267. **Elephant Toy Banks.** Two cast iron toy banks shaped as elephants, one mechanical (likely repro), one still. Painted blue and a metallic bronze color. 7 1/2 x 5" and 4 1/2 x 3". General wear and oxidation on both banks. Good.

50/100

268. **Independence Hall Toy Bank.** Philadelphia: Enterprise Manufacturing, ca. 1875. Cast iron still bank of "The Birth Place of American Independence." 7 x 9 1/2". General paint wear, crack in base. Good.

100/150



261



262



263



264



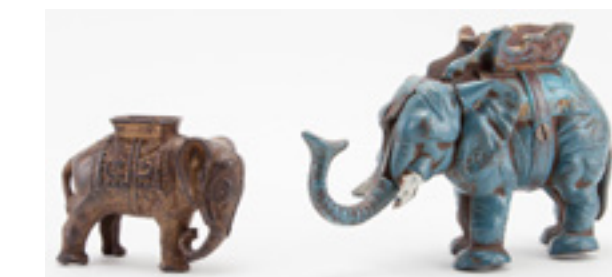
265



266



268



267



269



275



277



276



270

269. **Main Street Trolley Bank.** Early twentieth century. Cast iron toy bank of a main street trolley car with metallic coating. Also includes a reproduction Tank Bank USA 1918 cast iron toy bank. 6 1/2 x 3 1/2" and 5 x 3". General wear to color, especially at edges and on top. Good.

50/100

270. **Mechanical Cast Iron Bank. "I Always Did 'Spise A Mule."** American, late nineteenth century (underside reading "Patd. Apr 27, 1897"). Non-working mechanism causes donkey to swing around and kick the boy. Base probably repainted, otherwise very good. 9 1/2 x 6 x 2".

300/500

276. **Trick Pony Toy Bank.** USA: Shepard Hardware Co., ca. 1885. Original cast iron toy bank that has been repainted. 7 x 8". Very good condition besides repainting.

100/150

277. **Two Vintage Cast Iron Toy Banks.** Includes two cast iron toy banks, one "Old Liberty Bell Centennial Bank" from ca. 1876, the other is shaped like an elephant and from the late nineteenth to early twentieth century. Bell does not have original base, some places on elephant are repainted. Bell is 5 x 4 x 4" and elephant is 7 x 2 x 5". Both worn, elephant has chipping paint. Good.

50/100



278

271. **Mule Entering Barn Mechanical Bank.** Connecticut: J. & E. Stevens and Co., 1880. Cast iron mechanical bank, mule kicks his back legs when released and a dog comes out of his kennel. Painted with teal, red, and yellow paints. 8 1/2 x 3 1/2 x 6". Paint worn and chipped, many areas oxidized. Good.

500/800

272. **Organ Monkey Bank.** American, ca. 1885. Mechanical cast iron toy bank with a monkey, cat, and dog on the top. Possibly repainted. 5 x 4 x 8". Some chips to paint. Good.

100/200

273. **Owl Toy Bank.** Connecticut: J. & E. Stevens Co., ca. 1880. Cast iron toy bank with glass eyes in the shape of an owl. Head turns when button is depressed to allow coin through slot and into bank. 7 1/2" tall. Some original paint still visible but it is generally chipped and worn.

200/300

274. **Three Vintage Reproduction Cast Iron Banks.** American, mid-twentieth century. Three mechanical cast iron bank reproductions including "Trick Dog," "I Always Did 'Spise a Mule," and "Tooth-Pulling Dentist" (the last made by The Book of Knowledge). Largest is 9 1/2 x 8". All in good condition with minor paint flaws and wear.

50/100

275. **Three Vintage Toy Banks.** Including Seated Panda, Gar Wood Load-Packer (garbage truck-modeled bank), and Cash Register. Tallest is 4 1/2". Some light paint chipping on panda, light wear on the other two items. Good.

50/100

278. **Two Cast Iron Reproduction Toy Banks.** Made in Taiwan and USA, late twentieth century. One clown and one Black Americana-style cast iron toy bank with hand out and simple mechanical trigger to feed the coin in hand into the mouth. Both banks are approximately 7" tall. Light soiling and light paint chipping. Good.

50/80



279

ADVERTISING TINS

279. **Two Schepp's Tin Cake Display Boxes.** New York: L. Schepp, ca. 1910. Including green cocoanut cake box, flaking on top and all sides (9 1/4" x 11 1/4" x 12") and white display box, top dented and most of graphics missing (14" x 13 1/4" x 11 1/2").

100/200

280. **Putnam Dye Cabinet.** Quincy, Ill.: Monroe Chemical Company, ca. 1940. Cabinet which sat on or behind the store counter and held various colors of the product. Nice advertising on the inside of the lid. Strong colors, minor paint loss. 14 1/2" x 18 3/4" x 7 1/2".

100/200

281. **Mayo Cut Plug Tobacco Roly Poly "Mammy" Tin.** Tindeco, ca. 1910s. One of six designs of "roly poly" tins made for four different tobacco companies. While labeled "Brownie" tins, they are most often known as "roly poly." Approximately 7" tall. Wear and oxidation particularly around seams, dents on top and base, scratching to litho. Fair.

300/500

Each Roly Poly held a pound of tobacco, from one of four companies: Mayo's, Dixie Queen, Red Indian, and U.S. Marine. Six designs were created, the first being patented in 1912: Mammy, Dutchman, Satisfied Customer, Man from Scotland Yard, Singing Waiter, and Storekeeper.



280



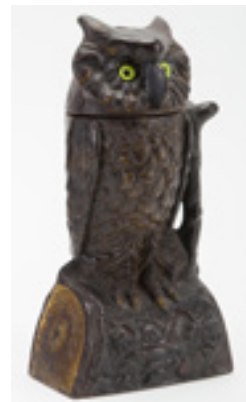
281



271



272



273



274



282

282. **Collection of 22 Tin Tobacco Tags.** Antique lithographed tin tags from various American tobacco companies, in a glass display case. Good condition generally.

50/100



283

283. **Pair of Sweet Burley Fine Cut Tobacco.** Spaulding & Merrick, ca. 1910. Including dark Sweet Burley, light flaking all the way around with lid (11 1/2" x 8") and light Sweet Burley, spotting all around and small dent with lid (11 1/2" x 8").

100/200



284

284. **Three Cut Plug Tobacco Tins.** Ca. 1910. Including George Washington lunch box (R.J. Reynolds Tobacco Co., Winston, Salem, N.C.) with lid damage, otherwise good (7 1/2" x 4 1/2" x 4 1/2"); Patterson's Seal lunch box (R.A. Patterson Tobacco Co., Richmond, VA), light damage on lid and light spotting all around (6 1/2" x 4 1/2" x 5"); and Belfast Cut Plug, United Cigars, minor damage (6" x 3" x 3 3/4").

50/100



285

285. **Pair of Fine Cut Tobacco Tins.** Including Sweet Cuba Fine Cut store bin (Spaulding & Merrick, Chicago) rust spots all the way around (8" x 8" x 9 1/2"); and Penn's Natural Leaf (American Tobacco Co.), good (6 1/2" x 2 1/2").

50/100

286. **Six Tobacco Tins.** Including Velvet canister, Spaulding & Merrick, Chicago, with minor paint loss in spots, (6" x 5 1/4"); Velvet pocket tin, Liggett & Meyers, light rust on lid, (4 1/2" long); Edgeworth canister, Larus & Bro. Co., Richmond, VA., paint loss to one side otherwise very good (5 1/2" x 6"); Edgeworth small tin, Larus Bro. Co., Richmond, VA., small amount of rust on bottom of lid (3" x 2 1/4"); Prince Albert pocket tin, R.J. Reynolds Tobacco Co., near mint and appears to be full of tobacco (4 1/4" x 3") and Tuxedo tobacco pocket tin, The American Tobacco Co., very good (4 1/4" x 3").

100/200



286

287. **Five Tobacco Tins.** Including Dixie Chop Cut, Allen & Ginter's, Richmond, VA., flaking and soiled (4 1/2" x 1 3/4" x 3 1/4"); Maryland Club, American Tobacco Co., soiled (4" x 2" x 2 1/4"); Cross Swords, J.B. Pace Tobacco Co., Richmond, VA., no paint right side light rust (4 1/2" x 1 1/4" x 3 1/4"); Matador, Aug. Beck & Co., Chicago, light flaking all sides (3 3/4" x 2" x 3"); and Crescent Club, maker unknown, light scratches (4 1/2" x 2" x 3").

100/200



287



288

288. **Dan Patch Cut Plug Tobacco Tin.** Detroit, Dillon Co., ca. 1900s. Dan Patch was an outstanding pacer of his day. Tiny paint loss and strong colors. 5 3/4" x 3" x 3 1/2".

50/100



289

289. **Four Tobacco Tins.** Tiger chewing tobacco, flaking on lid (6" x 2" x 3 3/4"); Union Leader cut plug, light flaking on sides and top dark from age (6" x 3" x 4"); Gail & Ax Navy Tobacco, G.W. Gail & Ax, light rust (5 1/2" x 1 1/4" x 3"); J.G. Dill's Best, J.G. Dill, Richmond, VA., scratches and light rust (6" x 1 3/4" x 4").

100/200

290. **Three Round Tobacco Tins.** Sweet Tip Top, Liggett & Meyers Tobacco Co., paper label, very good (6" x 5"); Alouette, B. Houde & Grothe Ltd., Quebec - Montreal, scratches and minor paint loss (4" x 4 1/4"); Buckingham, John J. Bagley & Co., paint loss in non graphic areas but graphics are strong (3 3/4" x 4 1/2").

50/100

291. **Six Cigarette Tins.** Lucky Strike Flat Fifties, The American Tobacco Co., rust along lid edges but strong graphics on lid (5 3/4" x 4 1/2"); Player's Navy Cut Medium, small tear in paper label not effecting image (3" x 3"); Oriental Cigarettes, Sullivan



291



292

Powell & Co. Ltd., London, England, tiny scratches but overall very good, (5 3/4" x 2 3/4" x 3"); Egyptian Cigarettes "The one cigarette sold all over the world", M. Melachrino & Co., small spot on lid with paint loss (5 1/2" x 1 1/4" x 4"); In-B-Tween Cigarritos, rust and flaking on lid (4" x 3/4" x 2 1/2"); Diamond Match Co., lid darkened and minor flaking (4 1/2" x 1 1/2" x 2 1/4").

100/200

292. **Five Cigar Tins.** Between the Acts Little Cigars, P. Lorillard Co., New York, very good (3 1/4" x 3"); Webster Cigars, Webster Cigar Co., lid dark and spotted (5" x 1 1/4" x 3 1/2"); Robert Emmett 10 Cent Cigar, Spietz Cigar Co. Makers, Detroit, lid darkened with minor scratches, (6" x 1 3/4" x 5"); Francis Lee round tin canister, W.H. Snyder & Sons, Windsor, PA., rust spots all around (5 1/2" x 5 1/2"); Ben Bey Cigars, rust spots on lid paper label on right side (9" x 2 3/4" x 6 1/2").

100/200

293. **Heinrich Haerberlein Chocolate Tin.** Germany: Heinrich Haerberlein. A chocolates tin embossed and lithographed to look like a little house or restaurant, with bell on side. 7 x 3 x 6". Light scratches and soiling. Very good.

50/100



293



294



295



296



297



298



299



300



301



302



303



304



305

294. **Two Peanut Butter Tins.** Including large round 25 pound Stone's Peanut Butter tin, Stone-Ordean-Wells Co., Duluth, MN., minor spotty paint loss and silver lettering lightly tarnished (6 1/2" x 12 1/2") and Frontenag Peanut Butter pail, Gannon Grocery Co., Marquette, Mich., very good (3 3/4" x 3").

100/200

295. **Two One Pound Cresca Raisin Tins.** Including Cresca embossed "Fancy Cluster Raisins", Cresca Co., New York and Bordeaux, France, spotty paint loss (4" x 1 1/2" x 8 1/4") and Cresca embossed "extra fancy loose muscatel raisons", Cresca Company, New York and Bordeaux, France, wear around edge of lid (7" x 1 1/2" x 4 1/2").

100/200

296. **Two Round Five Pound Marshmallow Tins.** Including Brach's "supreme white marshmallows", E.J. Brach & Sons, Chicago, very good, (6" x 10") and Yacht Club Marshmallows, Reid, Murdoch & Co., Chicago, very good (6" x 10").

100/200

297. **Two Round Five Pound Marshmallow Tins & Round Two Pound Pretzel Tin.** Including Dilling & Co's, Dilling & Co., Indianapolis, IN., minor scratches all around and dented lid (5 3/4" x 9 3/4"); Campfire Marshmallows, The Campfire Co., Milwaukee, Wis., dented lid and minor scratches (5 3/4" x 10") and Sturgis Pretzels, The Sturgis Pretzel Co., Reading, PA., minor scratches and small dent on side (6 1/2" x 10").

100/200

298. **Two Round Five Pound Mellomints Tins.** Including orange Mellomints tin, very good (6 1/2" x 8") and red Mellomints tin, minor spotting, rust on lid but overall good (5" x 9 1/2").

50/100

299. **Three Round Fruit Cake Tins.** Including Paradise Fruit Cake, Ward Baking Co., minor scratches (3 1/2" x 10 1/2"); Smith's White Fruit Cake, Gordon Smith, Mobile, Alabama, minor spots on lid (3 1/4" x 8"); and National Biscuit Co. Fruit Cake, paint spots on lid but sides clean (3 1/2" x 10").

50/100

300. **Six Toffee Tins.** Including Riley's Creamy Toffee, Riley Bros., Halifax, England, minor paint loss and rust on edges of lid (6 1/4" x 5 1/4" x 4"); Mackintosh's "Extra Cream Toffee", Famous Old English Sweetmeat, Works Halifax, England, lower corner right side rusted through and a few dents and minor scratches (6 1/4" x 5 1/2" x 4"); Fairy Peppermint Toffee, George W. Horner & Co. Ltd., London, England, minor scratching and small dent (8 1/4" x 6"); Thorne's "New Cream Toffee", Henry Thorne & Co. Ltd., Leeds, England, rust spots, (8 3/4" x 6 1/4" x 5"); Edmondson's "Red Seal" Toffee, Jonathon Edmondson & Co. Ltd., Liverpool, England, paint loss to red seal on one side and minor spots, (8 3/4" x 6 1/2" x 5"); and Thorne's Premier Toffee, Henry Thorne & Co., Leeds, England, very good (3 1/2" x 3 1/2").

100/200

301. **Rare 5 Oz. Kerr's Saratoga Potato Chip Tin.** Baltimore: David Kerr. Minor rust on lid otherwise excellent. 6" x 4 1/4".

50/100

302. **Six Biscuit Tins & One Soda Cracker Tin.** Including Huntley & Palmers, Reading & London, England, spotty paint loss (8" x 1 3/4" x 6"); Arnett's round biscuit tin, Arnett's Biscuit Ltd., Australia, excellent (5" x 8 1/2"); Mellin's Food Biscuits, Mellin's Food Ltd., Peckham, London, spotty paint loss (7 1/2" x 3" x 4"); Kennedy "Afternoon Tea Biscuit", National Biscuit Co., Chicago, spotty paint loss (7 1/2" x 2 1/4" x 6 1/2"); Sunshine Biscuits, Loose-Wiles Biscuit Company, Chicago, spotty paint loss, dent on one side (9" x 7" x 8 1/4"); Premium Soda Crackers, National Biscuit Company, Chicago, lid slightly dented, strong colors, minor scratches (9" x 7" x 8"); Assorted Biscuits, Loose-Wiles Biscuit Co., New York, N.Y., spots on lid (9 1/4" x 3 1/4").

100/200

303. **Three Cocoa Tins.** Including Droste's Cocoa, Droste, Haarlem, Holland, slight spotting on edges otherwise very good (3 1/4" x 5 3/4" x 3 1/4"); Monarch Cocoa, Reid Murdoch & Co., Chicago, one edge rusted (3" x 6" x 3"); Ward's "Superior Breakfast Cocoa", Dr. Ward's Medical Co., Winona, Minn., spotty paint loss, light dents on two corners (3" x 6 1/2" x 3").

50/100

304. **Eleven Candy, Confection and Short Bread Tins.** Including large round Brach candy tin, E.J. Brach & Sons, Chicago, IL., many scratches and colors appear to be faded (7 1/4" x 12 3/4"); Reed's Butter Scotch Wafers, Reed Candy Company, Chicago,

few spots and dents (8" x 10"); Bunte Diana "Stuft" confections, Bunte Brothers, Chicago, paint loss on edges and minor spotting, (4 1/2" x 9 1/4"); Louis Sherry, New York, excellent, (6" x 2 1/4" x 4"); Longchamps Chocolates, excellent (7 1/2" x 3 3/4" x 4 1/2"); Mavis Chocolates, Paris & New York, very good (7 1/2" x 2" x 4 1/2"); Sovereign "Queen of Assortment", rust around edge of lid and scratches, (3" x 10"); Large round Reliable Confections, Rueckheim Bros. & Eckstein, Chicago & Brooklyn, (6" x 12"); The Crawford Tartan Short Bread, paint loss on sides and minor spots on lid (4 3/4" x 1 1/2" x 3"); Droste "Langues de Chats", Haarlem, Holland, minor spotting (7" x 3/4" x 4 1/4"); and Wedgwood style tin heavily embossed, no writing, excellent (3 1/2" x 8").

100/200

305. **Eleven Commemorative Tins.** Including King George V Coronation, Roundtree & Co. Ltd, York, England, 1911, paint loss around edge of lid minor spotting (5 1/4" x 1/4" x 2 1/4"); 1910 GR 1936, paint loss (3 1/2" x 6 1/2"); "God Save Our Gracious Queen", lots of scratches and paint loss (4 1/2" x 6" x 3 3/4"); Roald Amundsen, A/S United Sardine Factories, Bergen, Norway, lots of spotting (5 1/2" x 2 1/4" x 4 1/4"); Silver Jubilee 1910-1935, spotting on lid and sides (7" x 3" x 5"); Embossed cover of crown and two portraits, very good (7" x 2 1/2" x 6 1/4"); H.M. King Edward VII and H.M. Queen Alexandra, 1902, heavy paint loss (5 1/2" x 4 1/4" x 4 1/4"); E. A. Coronation 1902, heavily embossed and dented front and back with quite a bit of spotting (6" x 3 3/4" x 4 1/4"); No printing, two portraits on lid, lots of spotting (7" x 3" x 4 1/2"); Silver Jubilee, 1910-1935, very good, (6 3/4" x 3 1/2" x 4 1/2"); No writing, palm trees and ocean, very good (9 1/2" x 5 1/2" x 8 1/2").

50/100



306

306. **Eight Miscellaneous Tins.** Including Royal Baking Powder, Standard Brands Inc., New York, N.Y., slight dent and minor fading (4 3/4" x 3"); Colgan's Mint Chips "The Gum That's Round", Colgan's Gum Co., Kentucky, lots of paint loss (3/4" x 1 1/4"); Church & Co's Baking Soda, Arm & Hammer, few scratches (2 3/4" x 3 1/4" x 2 1/4"); Mustard tin, Moss, Rimmington & Co., portrait of Tennyson on lid, darkened and spotting (4" x 2 1/2" x 4"); "La Poule Au Pot" Consomme Bouillon, paint loss (5 1/2" x 3 3/4"); Hoffman's No.1 Rice-Starch, Habicht Braun & Co., Agents for the U.S.A and Canada, Rust and paint loss (6 1/2" x 5 1/4" x 6 1/2"); Fune Boter Drabbelkoeken, Holland, many scratches, (10" x 4"); Morse's Duchess Brand, A.G. Morse Co., Chicago, U.S.A., scratches (4 1/2" x 9 1/4" 4 1/2").

50/100



307

307. **Nine Skin & Hair Care Product Tins.** Including Murray's Superior Hair Dressing Pomade, Murray's Superior Products Co., Chicago, excellent (1 1/2" x 3"); Nilo "Fabrica de Pomadas", Portugal, very good (1/2" x 2"); Lucky Brown pressing oil, Famous Products Inc., Chicago, excellent (3/4" x 2 3/4"); Lucky Brown Hair Dressing, Famous Products Inc., Chicago, excellent (1 3/4" x 3"); Assorted Grease Paints, The M. Stein Cosmetic Co., New York, very good (4 1/2" x 1 1/4" x 2 3/4"); Theatrical Make Up, The M. Stein Cosmetic Co., New York City, small spot on lid (2" x 4 1/4"); Blair's Snow White Hair Beautifier, Blair Laboratories, Lynchburg, VA., very good (1" x 3 1/2"); Stein's Alpine Cold Cream, The M. Stein Cosmetic Co., New York, minor paint loss around rim (1 3/4" x 4"); Cherie Dusting Powder, R.H. Macy & Co., New York, very good (2 3/4" x 5").

50/100



308



309

308. **Wish Bone Combination Four Pound Coffee Tin.** Bloomington and Springfield: Bunn Capital Grocery Co. Lid dented and paint loss in areas. 7 1/2" x 7 1/2".

100/200

309. **Chase & Sanborn's Superior Five Pound Coffee Tin.** Chase & Sanborn, Boston & Chicago. Some dents and minor paint loss. 10 1/2" x 7 1/4".

50/100



310

310. **Three Round Three Pound Coffee Tins.** Including Forbes Golden Cup Coffee, Jas. H. Forbes Tea & Coffee Co., St. Louis, MO., very good, 3 3/4" x 10"; Forbes Coffee, Jas. H. Forbes, St. Louis, MO., paint has crackling, 3 3/4" x 10"; Petring's "Kake Kan Koffee"; H.P. Coffee Co., St. Louis, MO., minor spotting on sides and rust on lid, 3 3/4" x 10".

100/200

311. **Five Coffee Tins.** Including "Old Master" Coffee, The Blodgett-Beckley Co., Toledo and Kansas City, dented bottom and numerous scratches and spotting (6" x 4"); Liberty Mills Java & Mocha Coffee, Durand & Kasper Co., Chicago, paint loss and small dent (6 3/4" x 5 1/2"); Breakfast Call Coffee, The Independence Coffee and Spice Co., Denver, Co. (6" x 4 1/4"); Coffee, Thos. Wood & Co., Boston, minor paint loss (7 1/2" x 4 1/4"); Bokar Coffee Supreme, The Great Atlantic and Pacific Tea Company, N.Y., NY., minor paint loss (5 3/4" x 4 1/4").

100/200



311

312. **Five One Pound Coffee Tins.** Including Old Southern Coffee, Larkin Co. Inc., Buffalo, NY, scratches and minor paint loss (6" x 4 1/4"); Morton House Coffee, Worden Grocer Company, Grand Rapids, Michigan, very good (6" x 4"); Lady Hellen Coffee, The Kellum Company, New York-Chicago-Kansas City, paper label excellent (5 1/2" x 4 1/4"); Griffin's "Money Back" coffee, Griffin Grocery Company, Oklahoma, very good (5 3/4" x 4 1/4"); Woolson's Vienna Coffee, The Woolson Spice Co., Toledo, Ohio, scratches and minor paint loss, (6" x 4").

100/300



312

313. **Six Coffee and Tea Tins.** Including Maxwell House Coffee half pound key wind, General Foods Corp., New York, dirt and minor scratches, (3" x 4"); Manor House Coffee one pound key wind, W.F. McLaughlin & Co., Chicago, IL., paint loss (4" x 5"); Silver Crown Koffie, Belgian (?), very good (5" x 4 1/2"); Douw Egberts Aroma-Koffie, minor paint loss and remains of sticky label on one side (7 1/2" x 4" x 4 1/2"); Sweet-Touch-Nee Tea, The Consolidated Tea Co., Lynbrook, N.Y., very good (5" x 3 1/4" x 3"); Lipton Orange Pekoe & Pekoe Tea Bags, Thomas J. Lipton Inc., Hoeboken, N.J. and San Francisco, CA., minor spotting (6 1/4" x 1" x 3").

100/200



313

314. **Five Coffee Tins.** Including five pound "Special Combination Coffee" bucket (missing handle), Sears, Roebuck and Co., Chicago, some spotting and minor rust (8 1/2" x 7 3/4"); Thomas J. Webb Coffee three pound round tin, Thomas J. Webb Co., Chicago, minor scratches and paint loss (9 1/2" x 5 1/2"); Coffee, Geo. Hellick Coffee Co., minor scratches and small white paint spot (8 1/4" x 6"); Chocolate Cream Coffee three pound round tin, Western Grocer Mills, Marshall Town, Iowa, some rust and spotting (9" x 6"); Fit For a King Coffee, H.G. Hill Co., Tennessee-Alabama-Louisiana, major spotting (9" x 5 3/4").

100/200



314

315. **Fifteen Miscellaneous Tins.** Including two Nestles Sweet Milk Cocoa, two Instant Postum, Royal tube patch outfit, Ovaltine, Spry, Three Kaffee Hag coffee, Monarch white pepper and; and four Kitchen Cleanser.

50/100



315

TRAYS



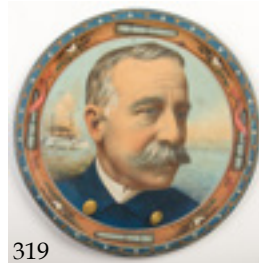
316



317



318



319



320



321

316. **Collection of Brewery and Other Vintage Advertising Trays.** 1940s - 60s. Seven pieces, comprising: The Beatles, Coca-Cola Santa Claus, Louis F. Neuweiler's Beer, Stegmaier Brewing Co., West End Brewing Co. (Utica, NY), J. Leinenkugel Brewing Co., and Scheidt's. Light to heavy wear, but generally good.

200/300

317. **Two Advertising Trays.** Fairy Soap tip tray "Have you a Little Fairy in your Home?", Chicago, Illinois: N.K. Fairbank Co., ca. 1910. 4 1/4"; and Oval tray with Elk probably Hartford Insurance but no writing, ca. 1920. 16" x 13 1/2."

50/100

318. **Billy Baxter Ginger Ale Round Tray.** Pittsburgh, PA: Billy Baxter Inc., ca. 1935. Round serving tray "Independent Merchants Support This Community Buy From Them". 13".

50/100

319. Dewey, George (Admiral of the Navy). **Admiral Dewey Portrait Tray.** New York: Sentenne & Green, early twentieth century. Vintage patriotic portrait tin lithographed tin tray, commemorative of Admiral Dewey and his heroism in the Spanish-American war. 12" across. Light scratches and scuffs. Very good.

50/100

320. **Group of Six Advertising Beer Trays.** Including Ambrosia Brewing Co. (Chicago, 1940s), Olympia Beer (Olympia, Wash., 1970s), Falls City Brewing Co. 70th Anniversary (Louisville, 1975), Hamm's Preferred Stock (St. Paul, late twentieth century), Arrow Beer/Globe Brewery (Baltimore, ca. 1935), and Schmidt's Beer (Philadelphia, 1930s-40s). Trays are either 13 1/4" across or 12". Condition ranging from fair to very good.

150/250

321. **Group of Tin Banks, Games, and Other Antiques.** Including a J&E Stevens Junior Cap Gun, a 1934 Chicago World's Fair Bank, an Ohio Art World Globe bank, two sets of Pick-Up-Sticks, two vintage Japanese sets of building blocks, four sealed decks of advertising playing cards, a Kaffee Hag coffee tin, a Cocomalt Chocolate tin, and three panels of Transfer Pictures made in Occupied Japan. Condition generally good.

100/150

322. **Jas. E. Pepper & Co. Whiskey Tray. Born With the Republic.** New York: Electro-Chemical Engraving, [n.d.]. Vintage tray patriotically advertising the distillery in Lexington, Kentucky. 12" diam. Minor scratching and crazing, but fine in overall appearance. Scarce.

400/600

323. **Pacific Beer Tray. Best East or West.** Vintage pictorial tin tray for the brewery in Tacoma. 12" diam. Mild scratching and paint losses.

50/100

324. **Two Advertising Trays.** Holland (Indiana): Holland Custard and Ice Cream Inc., ca. 1940s; Shakopee (Minnesota): Jacob Ries Bottling Co., ca. 1940s. Vintage tin lithographed trays, one for Rock Spring Sparkling water and one for Hollands Custard and Ice Cream, both with bright red litho and other highlights. 12" across for the circular tray, rectangular tray is 13" x 10 1/2". Fair to good.

60/80

325. **Edelweiss Round Beer Tray.** Chicago: Peter Schoenhofen Brewery, ca. 1913. 13" diam. Good.

100/200

326. **Two Round Beer Trays.** Including Inland Brewery (ca. 1910) 12" diam.; and McAvoy "Malt Marrow" (Chicago, McAvoy Brewing, ca. 1900) 12" diam. Good.

100/200

327. **Zett's Bavarian Beer Advertising Tray.** Pre-prohibition, ca. 1900-1920. Tin lithographed beer tray featuring a medieval man with a banner and coat of arms for Zett's Bavarian Beer. 13 x 13". Widespread scratches and cracks to litho. Fair.

80/100

POCKET MIRRORS

328. **Two Typewriter Pocket Mirrors.** Circa 1930. Round celluloid mirrors, including The Underwood Standard Typewriter, typewriter shown, mirror is spotted on back (2"); and Monarch Visible, typewriter shown (2").

50/100



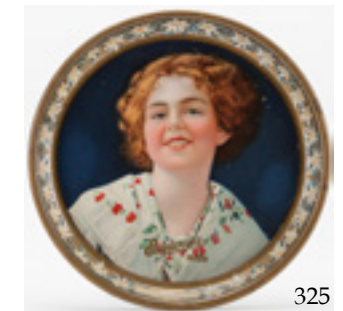
322



323



324



325



326



327



328



329

330

329. **Two Angelus Marshmallow Oval Celluloid Pocket Mirrors.** Circa 1930. Image of two child angels leaning on marshmallow box on both. 1 1/2" x 2 1/4".

100/150

330. **Angelus Marshmallow Oval Celluloid Pocket Mirror.** Circa 1930. Depicting a child angel blowing horn. 2 1/2" x 1 1/2".

50/100



331

332

331. **Mennen's Violet Talcum Toilet Powder Oval Celluloid Pocket Mirror.** Circa 1920. Purple flowers and portrait. 2 3/4" x 1 3/4".

50/100

332. **Red Seal Lye Round Celluloid Pocket Mirror.** Circa 1925. Depicting the canned product. 1 3/4".

50/100



333

334

333. **Two Duffy's Malt Whiskey Celluloid Pocket Mirrors.** Circa 1930. Including round mirror with scientist examining flask (1 3/4"); and an oval mirror with the same subject (2 3/4" x 1 3/4").

100/150

334. **Two Celluloid Tobacco Pocket Mirrors.** Circa 1920. Including round Mascot Crushed Cut Tobacco, with spotting on reverse, dog image (2"); and Piper Heidsieck Chewing Tobacco, Victorian lady pictured, spotting on reverse (2 3/4" x 1 3/4").

100/150



335

336

335. **Two Corset Celluloid Pocket Mirrors.** Circa 1930. Including round P.N. Corsets, depicting a woman wearing a corset, very slightly discolored (2"); and rectangular celluloid Gossard Corsets, woman wearing corset, slightly discolored bottom right corner (2 3/4" x 1 3/4").

50/100

336. **Two Celluloid Flour Pocket Mirrors.** Circa 1930. Including round Ceresota Flour, image of young boy seated on front of bag of flour, marks on reverse (2"); and oval White Poppy Flour, with an image of a bag of flour (2 3/4" x 1 3/4").

50/100



336

337

337. **Schaeffer Pianos Round Celluloid Pocket Mirror.** Poughkeepsie, New York: Chas. H. Hickok Music Co., ca. 1925. Piano image, marks on reverse. 2".

50/100



338

340

339

341



342

338. **Seven B-18 1914 Baseball Tobacco Felts.** Including Milan, Kelley, Keating, James, Tucker, Perdue and Mowrey. Condition generally good. 5 1/4" x 5 1/4".

100/200

339. **Seven B-18 1914 Baseball Tobacco Felts.** Including Peckinpough, O'Toole, Grant, Gibson, Graney, Foster and Murray. Condition generally good. 5 1/4" x 5 1/4".

100/200

340. **Seven B-18 1914 Baseball Tobacco Felts.** Including Brassler, Sweeney, Walsh, Wiltse, Whaling, Morgan and Moeller. Condition generally good. 5 1/4" x 5 1/4".

100/200

341. **Seven B-18 1914 Baseball Tobacco Felts.** Including Fletcher (tan border), Fletcher (green border), Doyle, Demmitt, Ainsmith (green pennant), Ainsmith (brown pennant) and Burns. Condition generally good. 5 1/4" x 5 1/4".

100/200



343



344

TOBACCIANA

342. **Ten N22 1888 Allen & Ginter's "Racing Colors of the World" Cigarette Insert Cards.** Including the following jockeys: R.W. Walden, Baron Schickler, Sir R. Dardine, H.R.H. Duke of Cannought, Appleby & Johnson, Aug Belmont, N.W. Kilson, Sir F. Johnstone, H.R.H. Prince of Wales, and Prince D. Saltykoff. Condition generally good. 2 3/4" x 1 1/2".

50/100

343. **Allen & Ginter Album of World's Beauties. Second Series.** Richmond, Virginia: Allen & Ginter Tobacco. Fifty lithographed pin-up beauties on twelve pages not including front and back cover. 6" x 8".

100/200

344. **W. Duke & Sons & Co. Album Heroes of the Civil War.** Durham: W. Duke & Sons Co., ca. 1888. Featuring extensive narrative along with stirring nineteenth century illustrations and poignant battleground imagery, the color illustrated 58-page volume focuses on the roles of Northern and Southern generals in the conflict, three full page color battle scenes and full page with portraits of Lee and Grant. Very slight corner damage to front cover. 10 1/2" x 6 3/4".

200/300



345



346



347



348



349



350

345. **Three S21 Murad Tobacco College Sporting Silks.** New York: Murad Tobacco Co., 1910. Including University of Chicago hockey; and two Wisconsin track. Fraying around edges. 6 3/4" x 5".

50/100

346. **Six S21 Murad Tobacco College Sporting Silks.** New York: Murad Tobacco Co., 1910. Including University of Minnesota track, Pennsylvania rowing, Colorado shot put, California hammer throw, Illinois track; and Harvard track. Some fraying around edges. 5 1/2" x 3 1/4".

50/100

347. **Five S21 Murad Tobacco College Sporting Silks.** New York: Murad Tobacco Co., 1910. Including Ohio shot put; Princeton hammer throw, Pennsylvania rowing; Syracuse track; and Yale shot put. Some fraying around edges. 6 3/4" x 5".

50/100

348. **Five S21 Murad Tobacco College Sporting Silks.** New York: Murad Tobacco Co., 1910. Including Wisconsin hammer throw, Ohio football, University of Chicago track, Yale, rowing; and Wisconsin track. Some fraying around edges. 5 1/2" x 3 1/4".

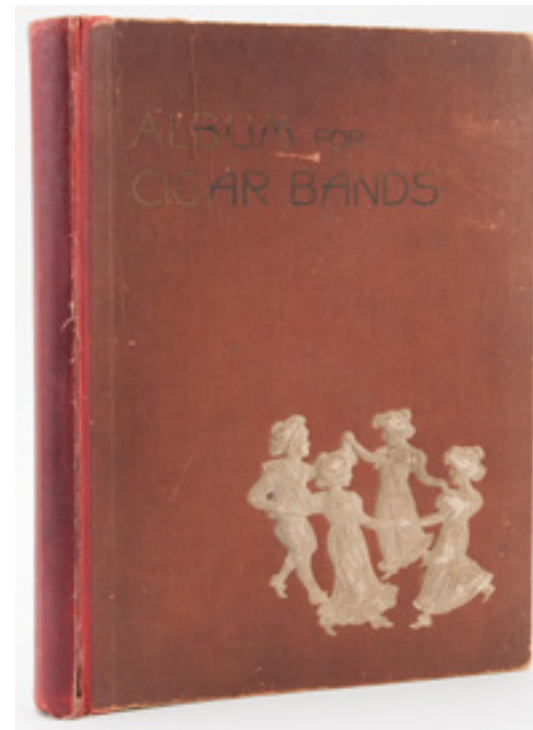
50/100

349. **Anna Held Cigars Paper Advertising Sign in Gold Washed Gesso Frame.** New Jersey & Virginia: American Cigar Co., ca. 1890. Anna Held was a Ziegfeld Follies girl as are most likely all thirteen of the Victorian ladies in the advertisement. 25 x 45". Not examined out of frame.

200/300

350. **Thirty Cigar Box Labels.** Including Two Homers, Seal of Philadelphia, Seminola, Spirit of St. Louis, Tom Mix, Vest Pocket, White Cat, Chief Rabban, Elsie, Joe Michl's "Fifty Little Orphans," American League (baseball), First National, Commoner, City of Tampa, 1861 Cleveland, Franklin D. Roosevelt, National League (baseball), First Cabinet, Orange Flower, Havana Conchas, Watchman, Mark Twain, Quaker Quality, Natchez, Pedro Ramos (baseball), Rudolph Valentino, R.M. Hoe, Morning Tap; and Sea Robin.

200/400



351

351. **Album of Over Four Hundred Cigar Bands.** 1900s. Including a complete set of 25 U.S. Presidents from Washington to Theodore Roosevelt. Also includes a number of Cuban labels.

1,200/1,400

352. **Lucky Strike Chrome and Plastic Carton Store Display.** Circa 1970. Store display for cartons of Lucky Strike Filters. 11 1/2" x 9" x 5 3/4".

50/100



352



353



354

353. **All Jacks Tin Cigarette Advertising Sign with Playing Cards.** Circa 1940. Image of "All Jack" cigarette pack with four jacks. 13 3/4" x 9 3/4".

50/100

354. **La Tosella Cigar Counter Top Display Dispenser.** Philadelphia: Borrow Bros. Inc., ca. 1900. Copper counter top display dispenser that held a box of the cigars advertised on front. 10 1/4" x 10 1/2" x 8 1/2".

200/300



355



360



356

FOOD, CANDY, CHEWING GUM, AND ALCOHOL

355. **One Cigar Ashtray and One Whisky Match Striker Advertisement.** Including Queen Caroline Havana Cigars cast iron ashtray; and Old Mason Whisky porcelain match striker.

50/100

356. **Two Bakelite Beer Table Displays.** Including Rheingold "Extra Dry" Lager Beer (New York: Liebmann Brewries, ca. 1930), which would hold napkins and straws, with slight chipping around rims, one holder detached; and Ruppert Beer-Ale "Old Knickerbocker" (ca. 1940s), its purple drinking cup removable.

100/200

357. **Two Large Cardboard Beer Signs.** Including Pearl Lager Beer, "Judge Roy Bean" cardboard sign with wood frame (ca. 1940), with "XXX" branded on top of frame (43" x 32"); and Budweiser "Custer's Last Fight" (ca. 1960) measuring 42" x 28 1/2".

200/300

358. **Ten Full Size Adams' Tutti Frutti Gum Playing Cards with Advertising on Reverse.** Brooklyn, New York: Adams & Sons Co., ca. 1910. Including 9C, 10C, JC, QC, KC, AC, JS, 10H, AH and AD. These cards are the identical playing cards that make up the two "which wins" hands on many of the Tutti Frutti advertisements and each card extols the virtue of chewing Adams' Tutti Frutti Gum on the verso. 3 1/2" x 2 1/2".

600/1,000

359. **Three Adams' Tutti Frutti Trade Cards.** Brooklyn, New York: Adams & Sons, ca. 1900. Two have testimonials and the third introduces two new flavors on the verso. Largest 5 1/4" x 3 1/2".

100/200

360. **Three Adams' Tutti Frutti Box Labels.** Brooklyn, New York: Adam & Sons Co., ca. 1885. Two of the labels have a portrait of Minnie Seligmann, a stage actress of the time, and one was attached to the lid of a box of the gum. Largest 9 3/4" x 4 1/4".

100/200



357



358



359



361

361. **Adams' Pepsin Tutti Frutti Gum Calendar Trade Card.** Brooklyn and Chicago: Adams & Sons Co., 1893. Possibly given as a premium with packs of gum or at trade shows. 4" x 3".

100/200

362. **Adams' Pepsin Tutti Frutti Gum "Columbus Waltz" Sheet of Music.** Brooklyn, New York: Adams & Sons Co., 1898. Composed by E. St. John with Tutti Frutti gum ad at bottom of front cover. 14" x 10 1/2".

100/200

363. **Six Adams' Tutti Frutti Gum Advertising Pieces.** Brooklyn, New York: Adams & Sons, v.d. Two pieces are cut from a newspaper or magazine, one is a tab gum wrapper, one is an envelope from the distributor, Geo. Miller & Son, and two are in original publications. Largest is 9" x 6".

100/200

364. **Four Adams' Tutti Frutti Gum Advertising Pieces.** Brooklyn, New York: Adams & Sons Co., v.d. Ten piece puzzle with advertising on one side and an individual playing card on the other. These cards are the same as the "which wins", ten miniature playing cards with advertising on the verso; and two hands with playing cards probably cut from a trade card.

100/200

365. **Thirty Three "Fan Tan" Chewing Gum Wrappers.** Dayton, Ohio: Fan Tan Gum Corp., 1920. Twelve with green writing and twenty one have red writing. Condition varies. 3" x 2 3/4".

100/200

366. **Wrigley Gum Counter Display.** Circa 1930s-40s. Thick glass counter display with ridged edges and "Wrigley" in bold red writing. 9 x 8 x 2". Some general wear in divet, glass no longer clear in that area.

50/100

367. **Goudey Indian Chewing Gum Cards.** Boston: Goudey Gum Co., 1933-40. Set of 24 cards from various series of the Goudey Indian Chewing Gum trading cards, made by the company to first sell baseball trading cards with chewing gum. Each card is approximately 2 1/2 x 3". Condition varies from very good to fair, edges generally a little worn.

100/150



362

363



364



365



366



367



368

368. **Horrors of War Trading Card Set.** Philadelphia: Gum Inc., 1938. A set of trading cards describing the horrors of war, particularly the second Sino-Japanese War. Illustrations on the cards are well-known to be surprisingly gruesome for the time period, depicting death and starvation. Each card is printed with "To know the HORRORS OF WAR is to want PEACE" on the back below text description. Set seems complete up until card 180 with duplicates, also includes 197 and 203. Each card is approximately 2 1/2 x 3 1/4". Generally very good condition, some edges worn, few cards with light soiling.

150/200



369

369. **Eight Candy Boxes.** Includes Blommer Milk Chocolate, Oh Henry, Mars, Milky Way, Three Musketeers, Baby Ruth, Hershey's Milk Chocolate and; Mary Jane Candy. Condition varies.

50/100

370. **Six Candy Boxes and Two Chewing Gum Boxes.** Including Milky Way, Juicy Fruit Gum, Tootsie Roll, Fairfield Chocolate, Andes Candies, Double Bubble Snickers and; Beich's Marshmallow Cream Bananas. Condition varies from fair to very good.

50/100

371. **Landreth's Red Rock Tomato Inkwell.** Bristol, Penn., mid-twentieth century. Inkwell made to advertise one of the oldest companies founded in the United States, the well being in the body of a "Red Rock" tomato. Approximately 3" high with a 5 1/4 x 4 1/4" base. Light scratches to paint, lid of inkwell no longer attached to hinges. Good.

50/80

The D. Landreth Seed Company, founded in 1784, is historically significant for selling crop seed to George Washington and Thomas Jefferson, and introducing tomatoes, white potato varieties, and the Zinnia plant to North America.

SIGNS

372. **Double Sided Hanging Zinc "Barber Shop" Reverse Hand Painted Lighted Glass Sign.** Maker unknown, ca. 1930. Light-up sign reading "Barbershop/ James Cochran" on both sides with a blue and red border. Original hanger. Not tested. 28" x 20".

400/600

373. **Case International Harvester (IH) Porcelain Sign.** Case, ca. 1970. Porcelain advertising sign. 24" x 12".

200/400



374

374. **Entry Price Sign.** American, mid-twentieth century. Plastic sign with top metal edge cover, naming entry fees for adults and children, 21 cents and 16 cents, respectively. 12 x 6". Two large repaired cracks, widespread scratches. Fair.

50/100

375. **Train Car Quiet Sign.** Chicago: The Pullman Press, ca. 1940s. Train car sign reminding passengers to be quiet and asking "Have you forgotten any personal property?" 9 x 6". Small tear from bottom edge, light edge wear. Good.

50/100

376. **Imperial Club Embossed Tin Cigar Sign.** Philadelphia: I.N. Carvalho & Co., ca. 1900. Embossed tin with original hanging chain. 13 3/4" x 10".

300/400

377. **Drink Moxie Double Sided Flange Sign.** Bedford, NH: Moxie Beverage Co., ca. 1940. 18" x 9".

400/600

378. **Three Piece Counter Top Die Cut Advertising Sign.** Maker unknown, ca. 1920. Advertising "Boncilla, Cosmic Beautifier." 68" x 33 1/2".

200/300

379. **Three Hanging Cardboard Advertising Signs.** Including "J.P. Alley's Hambone" cigars, Brilliantshine Metal Polish; and Klondike Head Rub embossed cardboard sign. Largest 11" x 8 1/2".

100/200

380. **Large Coca-Cola "Coke Tme" Cardboard Advertising Sign in Original Coke Frame.** Atlanta: Coca-Cola Co., 1954. Large cardboard ad in original gold washed frame with embossed metal Coke bottle plate on bottom. 40 1/2" x 25 1/2".

400/600



(recto & verso) 375



376



377



378



379



380



370



371



372



373



381



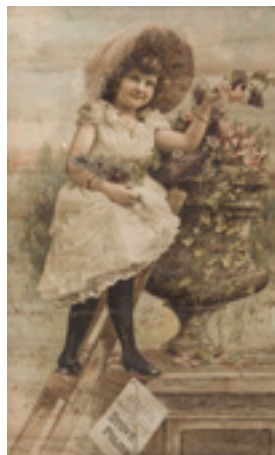
386



382



383



384



385



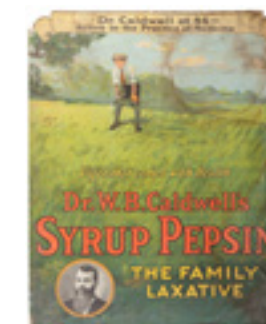
387



388



390



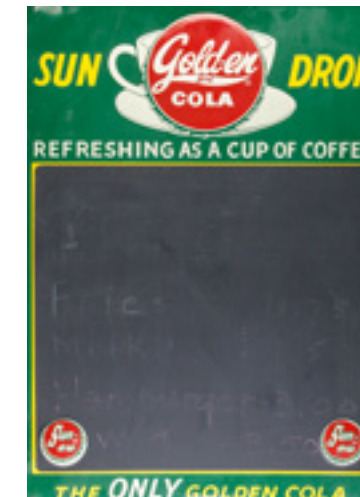
389



391



392



393

381. **Two Coca-Cola Advertising Signs.** Atlanta, Georgia: Coca-Cola Co., 1969. Both signs identical silk screened on Plexiglass in metal frames. The logo was dubbed "The White Wave" in 1969. 36" x 17".

100/200

382. **Two Coca-Cola Advertising Pieces.** Including a vintage Coca-Cola "Mighty Refreshing" calendar (ca. 1950s) depicting a group of young people gathered around an ice box filled with Cokes, one man shooting arrows at a Coke target (22 x 12"), and a color Coca-Cola window card (ca. 1960s) featuring football players (21 1/2 x 13 1/2").

150/250

383. **Group of Coca-Cola Advertising and Ephemera.** 1940s - 50s. Including four no-drip bottle protectors, three "friendliest drink on Earth" blotters, and four checks from the Coca-Cola bottling company of Ottumwa, Iowa. All very good.

50/100

384. **Dixon's Stove Polish "Cabaret of Iron" Paper Sign.** Circa 1900s. Color lithograph. Framed and matted 26 x 19" overall. Mild soiling and creasing apparent.

100/150

385. **Ford Motor Cut Out Wood Sign.** Detroit, Michigan: Ford Motor Co., ca. 1920. Most likely hung in a dealership. 43" x 15 1/2".

100/200

386. **Emblem Java and Mocha "Gas Roasted" Coffee Paper Sign.** Omaha, Nebraska: Paxton & Gallagher Co., ca. 1890. Victorian lady drinking a cup of coffee, not examined out of frame. 24" x 18 1/2".

400/600

387. **Two Love Nest Five Cent Candy Bar Signs.** New York: The Euclid Candy Co., ca. 1930. Including five cent Love Nest tin sign "The Best Eating Candy Bar" in wood frame, minor crease in upper and lower left corner and a few spots (20 1/4" x 7 1/2"); and five cent Love Nest Trolley sign "Best Pal" in metal frame, small crease lower left, not examined out of frame (21 1/4" x 11 1/4").

200/300

388. **Cracker Jack Stand Up Cardboard Store Display.** Purchase, New York: Pepsi-Cola Co., ca. 2000. Large standee of the brand's iconic boy. 72" tall. Good.

100/200

389. **Dr. W.B. Caldwell's Syrup Pepsin Standee.** Circa 1900s. Color lithograph standee. 26 x 20". Soiled, scuffed, and somewhat worn around edges. Fair.

100/150

390. **Calcutta Rubber-Namel Tin Stand Up Counter Display Store Sign.** Cincinnati, Ohio: Cincinnati Varnish Co., ca. 1930. Sign has eighteen different color samples attached to front, easel on back in wood frame, litho of old automobile on top, rust damage. 22 1/2" x 16 1/4".

200/300

391. **Prime Electric Fence Tin Advertising Sign.** Covington, Ky.: Donaldson, ca. 1960s. For the supplier in Good Thunder, Minnesota, a multi-color pictorial embossed tin sign depicting a control box for the electric fencing. 14 x 20". Very good.

150/250

392. **SWP "Cover the Earth" Die Cut Porcelain Advertising Sign.** Cleveland, Ohio: Sherwin Williams Paint Co., ca. 1950. Porcelain outdoor advertising sign. Some chipping. 36" x 19".

200/300

393. **Sun-Drop Golden Girl Cola Tin Diner Blackboard Sign.** N.p., ca. 1960s. Embossed tin sign in four colors, incorporating a blackboard panel centrally. 28 x 19". Very good.

200/300



394



399A

394. "Futuro Elastic Braces" Display. Circa 1940. Figure in display shows all of the various uses on the body for elastic braces, in Lucite frame, minor damage, not examined out of frame. 20 x 16".

100/200

395. Two Vintage Advertising Signs. Including a "Drink Winenot" cardboard hanging sign (13 1/2" x 10 1/2") and a tin hand-stenciled "For Sale" sign (ca. 1960s) 20" x 14".

50/100

396. Dutch Farms Ice Cream Hanging Restaurant Sign. Chicago, Illinois: Dutch Farms, ca. 1950. Ice cream made by Nelson's Ice Cream. Advertises different flavors of ice cream available.

50/100

397. Three Large Pennsylvania Railroad Calendar Sheets. Philadelphia: Pennsylvania Railroad, various dates. Including "Mainlines Freight and Passenger," 1949, "Power," 1945; and "Partners in National Defense," 1942. All with original pads. All measure 28 1/2" x 28 1/2".

100/200

398. Two Large Pennsylvania Railroad Calendar Sheets and One Conductor Hat. Philadelphia, Pennsylvania: Pennsylvania Railroad, 1943. Both calendar sheets the same "Serving the Nation," with nice graphic of Uncle Sam. 28 1/2" x 28 1/2". Conductor's hat maker and date unknown but nice brass plate in front and gold-tone braids.

100/200

399. Vargas, Alberto. Esquire Pin-Up Calendar. Chicago, 1943. Calendar with paintings by Vargas and verse by Phil Stack. 12 x 8 1/2". Some soiling on front page (January) and back (no illustration), a few light folds. Good.

100/150

399A. Dr. Pepper Advertising Calendar with Elyse Knox. 1944. Partial calendar (January and February). 28 1/2 x 20". Creases, a few tears, but otherwise good.

100/200



400

400. Three Die Cut Advertising Signs. "Grove's Tasteless Chill Tonic No Cure No Pay," three legs creased, 8 1/2" x 8 1/2", "Genuine Butter-Nut Bread", crease across girl's forehead, 13 1/2" x 10 1/2" and Kama Sutra Oil "Touch Softly" with stand up easel on verso, 10 1/2".

100/200

401. Five Miscellaneous Advertising Pieces. Including large trade card Brainerd & Armstrong spool silk, 13 1/2" x 6 3/4", sheet showing different colors for Rosaine Hosiery, possible magazine ad, 11 1/2" x 8"; National Life Insurance Co. colored litho "Hauling Home the Christmas Boughs" similar to a Currier & Ives scene, fold in middle torn, 16" x 12"; colorful Mogul Cigarette advertisement, might be cut from magazine, 8 3/4" x 5 1/2"; and Cadbury Cocoa, ca. 1887, likely from a publication, 12 3/4" x 9 1/4".

100/200

402. Two Advertising Sheets. Including a beautiful color flyer showing the line of "Blue Ribbon" buggy whips (Los Angeles, California: Los Angeles Saddlery & Finding Co., ca. 1900.) 12" x 9"; and an ad showing trucks purchased by Coca-Cola (Detroit, Michigan: Federal Trucks, ca. 1935) most likely a magazine ad. 10 1/2" x 7 1/2".

50/100

403. Remington 1965 Store Gun Display Kit. Bridgeport: Remington Arms Co., 1965. Including six framed prints from the 1965 Remington anniversary calendar, window decal; and nylon 66 rifle transparent banner all in original shipping box.

50/100

403A. Remington Gun Dealer Advertising Placard. Circa 1940s. Vintage cardboard advertising sign for authorized dealers of Remington firearms, prominently featuring a rifle at center. Many old creases and chips, some soiling. 11 x 22 1/2".

MISCELLANEOUS ADVERTISING

404. Original Coca-Cola Cooler Radio. Atlanta, Georgia: Coca-Cola Co., ca. 1950. Working with no chips or cracks. Original panel on back. 9 1/2" x 12 1/4" x 7 1/2".

400/600



401



402



403



403A



404



405



406



410



411



412



413



407

405. **Coca-Cola Server Apron.** Atlanta, Georgia: Coca-Cola Co., ca. 1940. Very nice example of a Coca-Cola server apron showing the classic Coca-Cola bottle. Trade mark in tail of logo. Original tag. Some soiling.

50/100

406. **Coca-Cola Bottle Carrier and Three Green Glass Bottles.** Atlanta, Georgia: Coca-Cola Co., ca. 1930. Sheet metal Coca-Cola bottle carrier maybe for use in stadiums; and three green glass six ounce Anchor Hocking bottles, "Drink Coca-Cola" embossed on either end, paint loss. 11" x 12 1/2" x 10 1/4".

200/300

407. **Coca-Cola Cooler.** Atlanta, Georgia: Coca-Cola Co., ca. 1928. Four embossed tin panels on each side and an original double panel lid. 30" x 29" x 22".

300/500

408. **Twenty One Coca-Cola Letterheads (1908-1930) and Four Chicago Related Soft Drink Letterheads.** Includes letterheads from different Coca-Cola bottlers; Chocolate Products Co. (Kayo); Theonett & Co., Inc., Orange Crush Co.; and Schoenhofen Company (Green River).

300/400

409. **Set of Four Coca-Cola Playing Card (Suit Symbols) Glass Ash Trays.** Atlanta, Georgia: Coca-Cola Co., ca. 1940. Ruby colored clubs, diamonds, hearts and spades embossed "Drink Coca-Cola." 2 1/2".

300/400

410. **Two Vintage Coca-Cola Advertising Trays.** Atlanta, Georgia: Coca-Cola Co., 1938 & 1939. The lithography on both trays was done by American Art Works Inc., Coshocton, Ohio. The 1938 tray is girl in yellow. 13 1/2" x 10 1/2".

200/300

411. **Two Coca-Cola Pencil Boxes.** Atlanta, Georgia: Coca-Cola Co., ca. 1950. One box is printed in gold and the other silver. Both appear complete with two pencils, red & blue pencil, penholder, pen point, eraser, ruler and two school size blotters. 8 1/2" x 2 1/4".

200/300

412. **Three Coca-Cola Leather Wallets and One Coca-Cola Watch Fob.** Atlanta, Georgia: Coca-Cola Co., Early 1900's to 1920's. Wallets possibly pigskin and with minor damage and fob appears to have original strap.

200/300

413. **Coca-Cola Oval Porcelain Sign.** Circa 1940s. Vintage porcelain Coca-Cola advertising sign. Drill holes at ends for mounting. 16 x 11". Good.

200/300

414. **Seven Coca-Cola Advertising Pieces.** Atlanta, Georgia: Coca-Cola Co., 1930-1960. Including ice pick with bottle opener, ice pick with wood handle in original box (tears and taped), two sets of nature study cards in original boxes; and three Coca-Cola bottling pieces demonstrating the process used in washing and re-using returned Coca-Cola bottles. Largest 10 1/4".

100/200

415. **Eight Coca-Cola Magazine Advertisements.** Three in color. Largest 14 1/2" x 9 3/4".

50/100

416. **Ten Coca-Cola Magazine Advertisements.** Atlanta, Georgia: Coca-Cola Co. 1915 to 1950. Items are all shrink wrapped so have not been examined out of the shrink wrap.

100/200

417. **Coca-Cola Newspaper Insert.** Atlanta, Georgia: Coca-Cola Co., ca. 1925. Some margin tears and slight browning with age. 21 1/4" x 16".

50/100



408



409



414



415



416



417



418



423



424



425



426

418. **Double Cola Cooler.** Chattanooga, Tennessee: The Double Cola Co., ca. 1950. Has original lid. 36" x 33" x 23".

200/400

419. **Aunt Jemima Cast Iron Door Stop.** USA, ca. 1940. Large cast iron Aunt Jemima figurine, possibly repainted. Approximately 14" tall. Widespread oxidation spots on apron and headscarf, paint cracking, and some soiling.

100/200

420. **The Beatles Yellow Submarine Calendar.** New York: Western Publishing Company, Inc., 1968. Made for the year 1969, this is a colorful and humorous unmarked calendar with a few interesting holidays printed in, including George Harrison's Birthday. 12 1/2 x 12 1/2". Spiral bound. Light scuff on front illustration. Very good.

100/200

421. **The Beatles "Disk Go Case" for 45 RPM Records.** Nems Enterprises Ltd. and Charter Industries (U.S.A.), 1966. Pink plastic case with portraits and signatures of the Beatles, opens by turning handle on top. Approximately 8" diameter. Overall light soiling, handle plastic yellowing. Good.

80/125

422. **Cherry Smash Bottle Toppers.** Richmond (Virginia): John E. Fowler, Cherry Smash; ca. 1930s. Two paper bottle toppers for Cherry Smash, "Our Nation's Beverage," unused. Also includes calendar holder for Kuhn's Food Shop (ca. 1950s), made out of embossed cardboard. 7 1/2 x 12" and 6 1/4 x 9". Excellent.

50/100

423. **Hazard Powder Co. Wooden Barrel Gun Powder Holder.** Hazardville, Connecticut: Hazard Powder Co., ca. 1890. Held "Kentucky Rifle Gunpowder," Nice lithographed label on top. 8 1/4" x 6 1/2".

400/600



427



428



429



430



431

424. **Heinz "Apple Butter" Clay Jug with Lid.** Pittsburgh, Pennsylvania: H.J. Heinz Co., ca. 1900. Paper label in front and original handle. 7 1/2" x 7 1/2".

100/200

425. **Counter/Window Display Stand for Koch Harmonicas with Original Crank Handle.** Circa 1920. Embossed aluminum base with iron disc on top that rotates when the handle is cranked to display their line of harmonicas. 12 1/2" x 6 1/4".

200/300

426. **Esterbrook Celebrated "Steel Pens" Oak Counter Top Display Case.** Circa 1910. Counter top display case holding the nibs that went with Esterbrook pens, drawer in back to hold stock. 14" x 13 1/4" x 5".

300/400

427. **Glidden Paint Standup Store Display.** Cleveland, Ohio: Glidden Coatings and Resins, ca. 1990. Paint spilling out of an empty can into a puddle on the floor. 34" tall.

100/200

428. **Salesman Sample Rotary Phone Display.** Maker unknown, ca. 1950. Nine miniature rotary telephones showing different colors and one different style in plastic case, one phone slightly damaged and crack in corner of case, 20" x 15".

100/200

429. **Lady Englander Princess Box Spring Store Display.** Circa 1950. Store display showing the inner workings of the "exclusive body tuned free-end offset coils" of this particular style mattress, original tag. 26" x 18 1/4" x 5 3/4".

100/200

430. **Abbott Automatic Check Perforator.** Chicago, Illinois: Abbott Machine Co., ca. 1891. Cast iron base, brass fittings and wood handle, complete. 4" x 7" x 6 3/4".

100/200

431. **Shore "Select Your Own Glasses Self-Fit Machine".** Shore, ca. 1940. Very much like our modern machines. 19" tall.

100/200



420



421



422





432



437



438



433

432. A.G. Spalding & Bros. Wall Mount Stomach Exerciser. New York: A.G. Spalding & Bros., ca. 1910. Mount this machine on the wall, press your stomach against the seven wooden balls and crank the handles. 23" x 13".

200/300

433. Three Advertising Pieces. Including brass "Sorosis Shoes for Women" counter display, 4 3/4" x 3 1/4", A. Tresters Sons Co. "Clothiers & Hatters, cast iron ashtray and; salesman sample mirrored thermometer with two men at arcade shooting gallery "Your Advertisement Neatly Printed in this Space."

50/100

434. Ten Display Advertising Hands and Man and Woman Hanging Plaster Torsos. Maker unknown, ca. 1930. Including Viking Gloves, Tru-Fit Gloves, Hansen Gloves, two Nolan Gloves, Lauer Gloves, Dawnelle, Grandoe, Rayette Hair Coloring; and a plaster male and female torso with wire for hanging. Condition generally good or better. Largest 23" x 13".

300/400

435. Three Advertising Poster Related Publications. Including the magazine *The Poster: the national journal of poster advertising and poster art*, 64 pages, September, 1925, almost every page filled with beautiful lithography of advertising posters many in color; *1957 Poster Annual, the art directors club of America picks the best posters of the year*, 62 pages; and *1958 Poster Annual*, 66 pages.

50/100

436. Old Mr. Boston Liquor Store Display Eight Day Gilbert Advertising Clock. Circa 1930. With key, not tested. 22" tall.

300/500

437. Album of Over 400 Victorian Trade Cards. Including Medicinal, Pianos and Organs, Stoves and Ranges, Food, Smoking, Sewing, and many more. Pictured are Hires, Mechanical card and hold to light card. Many have been removed from an album with some damage on versos.

400/600



439



440

438. Five Advertising Calendars. Maker unknown. Including Economy Food Shop, 1939 full pad, Maplewood Confectionery, 1938 full pad, Alka-Seltzer six pages two months on each page, 1941, Alka-Seltzer six pages two months on each page, 1937, and "Peter's Shoes" G. Sonneborn's Sons, Monee, IL., 1930 full pad.

50/100

439. Two Playing Card Pictorial Items. Shakespeare on the Game of Draw Poker, throughout the plays of Shakespeare a reader can find lines that might refer to the game of draw poker; and a 1928 page from the "Book of Art Printing" advertising the round non-revoke deck of the "International Playing Card Co.

100/200



441

440. Two Advertising Pieces. Including Bowman Dairy Company child's cardboard puzzle in original sleeve, ca. 1940, 8" x 7"; and thermometer advertising Augusta Bakery, Chicago, 5 1/4" x 4 1/4".

50/100

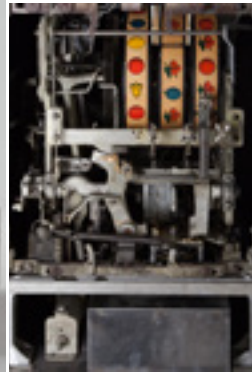
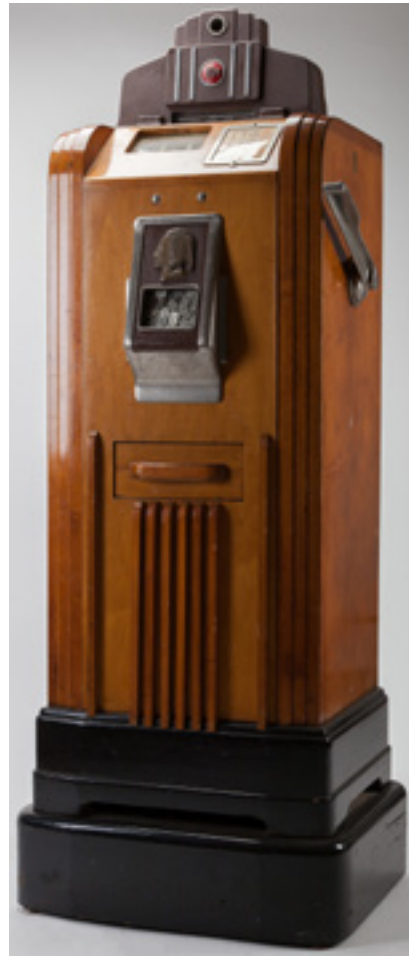
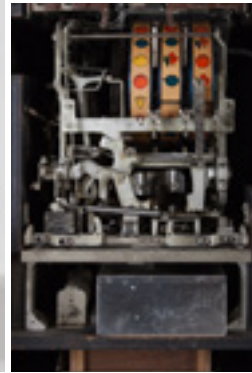
COIN-OPERATED MACHINES

441. Five Cent Mills Cherry Front Slot Machine. Chicago, Illinois: Mills Novelty Co., ca. 1946. Original Mills cherry front slot machine. Lock and key. Working.

800/1,000



436



442. Five Cent O.D. Jennings "Bronze Chief" Console Slot Machine. Chicago, Illinois: O.D. Jennings Co., ca. 1940. Handsome all wood cabinet with payout drawer in center. Lock and keys, not tested. 58" x 18" x 16." Working.

2,000/3,000

443. Ten Cent O.D. Jennings "Bronze Chief" Console Slot Machine. Chicago, Illinois: O.D. Jennings Co., ca. 1940. Companion piece to above lot. Lock and keys, not tested. 58" x 18" x 16." Working.

2,000/3,000



444. Automatic Hostess Juke Box. Grand Rapids, Michigan: National Automatic Music Co. (re-named Automatic Music Instrument Co. (AMI) after World War II). Back door, lock and key. Not tested. ca. 1940. 63" x 32" x 19."

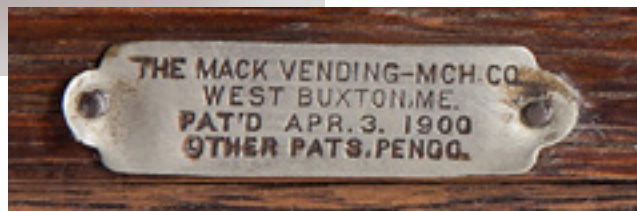
3,000/5,000

A scarce and unusual jukebox in that it contains no phonograph mechanism. After depositing a coin, the customer spoke into a microphone that connected to an operator in a remote studio, who would then locate the desired record and play the request. The technology was ahead of its time and only lasted until the mid 1950s.



445. 1080 Wurlitzer Juke Box. Cincinnati, Ohio: Rudolph Wurlitzer Co., ca. 1947. One of Paul Fuller's finest designs along with the ever popular model 1015. Often referred to as the "Mae West" for its curvy design. Small piece of plastic with 5¢-10¢-25¢ above coin slot missing but repro available on line. No key and not tested. 59 1/2" x 32" x 24".

3,000/5,000



446. **Five Cent Mack Cigar Vending Machine.** West Buxton, Maine: The Mack Vending-Mch. Co., ca. 1900. Rare machine and unusual in that it has no lock or key and the only way to enter to fill the machine and recover the nickels is to unscrew the back door. Original unrestored condition. Not tested. 21 1/4" x 14 1/2" x 10 3/4".

6,000/8,000



447

447. **One Cent Four Column Gum And Chocolate "L" Vending Machine.** New York and Chicago: Volkmann Stollwerck & Co., ca. 1892 (earliest patent date on coin entry is 1888). Oak and cast iron with porcelain plate describing contents including Chocolate, Dentyne Gum, Wintergreen Gum with Pepsin and Chicklets (Peppermint). Mirror replaced otherwise all original. Lock and key. Working. 30 x 8 1/2".

1,000/1,500

448. **One Cent Ryede Specialty Works Tab Gum Machine.** Rochester, New York: Ryede Specialty Works, ca. 1920. Original beveled mirror in front as well as decals and instructions. Most likely was placed in New York subway stations. Original lock and key. Not tested. 22" x 3 1/2" x 2 1/4".

300/400



449

449. **Norris Masters One Cent/Five Cent Countertop Peanut Machine.** Norris Mfct. Co., ca. 1930. Beautiful example of this unusual machine. Heavily embossed front with patent dates and instructions, buyer gets one turn of the handle for a penny and five turns for a nickel, all original with very small chips on base and bottom back corners, original lock and keys, not tested. 15 1/2" x 8 1/2".

600/800



450



451



452



453



454



455

450. **Acorn One Cent Ten Column Counter Top Tab Gum Dispenser.** Culver City, California: Oak Mfct. Co., ca. 1947. All columns have original tab gum including, Wrigley Spearmint, Wrigley Juicy Fruit, Wrigley Doublemint, Beech-Nut Cinnamon, Beech-Nut Peppermint and Beech-Nut Fancy Fruit. Buyer turns handle on top to select correct column of gum. Minor paint chips. No keys and not tested. 16" x 7 3/4".

200/300

451. **Columbus Model A One Cent Gumball Machine With Slug Rejecter Coin Entry.** Columbus, Ohio: Columbus Vending Co., ca. 1925. Original machine with rare slug rejecter coin entry, minor scratches, original barrel locks and keys. Not tested. 16" x 7 1/2".

600/800

452. **One Cent B&O Hit the Target Space-Themed Gumball Machine.** Circa 1950s. Metal gumball machine (body expertly repainted) with original space-themed front panel, behind glass, which the gumball clatters through on its way down. Working, with original key. 20 x 9 1/2 x 9 1/2".

250/350

453. **One Cent Yu-Chu Gumball Machine.** Newark, New Jersey: Yu-Chu Co., ca. 1925. Body is pot metal but no sign of damage and glass jar has "3 QT" embossed. Lock is located on bottom and there is a key. Not tested. 13".

100/200

454. **One Cent Northwestern Model 33, "M.C. Prine" Peanut Machine.** Morris, Illinois: Northwestern Corp., ca. 1933. Embossed on the flap is M.C. Prine, Baraboo, Wisc, a private label vending co. licensed by Northwestern. This machine is cast iron that makes it earlier and rarer than the models with porcelain bases and lids. Lock and key may not be original. Art deco motif base and top Not tested. 15 1/4" x 9".

200/300

455. **One Cent Northwestern Gumball Machine.** Morris, Illinois: Northwestern Corp., ca. 1933. Base is cast iron and not porcelain so probably an earlier version. Nice Art Deco design on base and top. No bottom plate but has lock and key for bottom. 14" x 7 1/2".

200/300

456. **One Cent D. Robbins "Empire" Peanut Vendor.** D. Robbins & Co., ca. 1932. All aluminum with embossed outline of the Empire State Building on the front. Corrosion and rust in the peanut area and no glass in front. Key. Not tested. 16 1/2" x 7 1/2".

100/200



457



456



458

457. **Four Miscellaneous Peanut and Gum Vending Machines.** Including Five Cent Regal Products Co. peanut vendor, pot metal with lock and key, not tested ca. 1930, 11 1/2" x 6 3/4", five cent "Steel City Ace" peanut vending machine, Steel City Vending Co., ca. 1930, pot metal, lock but no key, small chip on lid, not tested, 15" x 6 1/4", five cent peanut vendor, maker unknown, ca. 1930, pot metal, no lock or key, not tested, 13 1/2" x 6" and; one cent gumball vendor, maker unknown, ca. 1933, No glass but lock and key present, not tested, 14" x 7".

400/600

458. **One Cent Ford Gumball Machine Number 7367.** New York and Ohio: Ford Gum and Machine Co. Inc., ca. 1940. Very unusual coin entry, nice decal and lock and key. Not tested.

200/300

459. **Mystigraph "The Wonderful Fortune Teller" Arcade Machine.** Walden, New York: Charles M. Meeks Co. Inc., ca. 1906. Pick a question drop a coin and the screen lights up with the answer. There are not many examples of this machine. Working.

2,000/3,000



459



460

460. **Ten Cent Watling Zodiac Porcelain Scale.** Chicago, Illinois: Watling Mfct. Co., ca. 1950. Pull the lever corresponding to your zodiac sign and a fortune telling card is dispensed. Porcelain with large mirror in front. Scale works, zodiac not tested. 63" x 16" x 24".

400/600



461

461. **Kalloscop Stereo Viewer.** London, E.C.: The Rose Polyphon Co., ca. 1900. Operates on a large English penny. Wood case with several stereo cards inside. No lock or key. Not tested. 19 1/2" x 14" x 12 3/4".

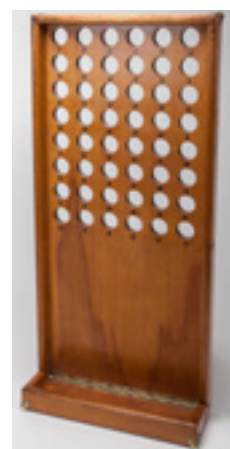
800/1,000



462

462. **One Cent Counter Top "Heart" Light Up Machine.** Chicago, IL: Exhibit Supply Co., ca. 1940. Twelve hearts cut into wood playfield with light bulb in center, wood cabinet and Exhibit Supply decal on front, no key, not tested.. 19" x 10 3/4" x 9 3/4".

100/200



463

463. **Carnival Wood Board with Numbered Holes and Hinged Bottom.** No maker, ca. 1900. Operator put balls in the hinged tray and player tries to roll them into the correct holes to win a prize. 35" x 16".

100/200



464

464. **Cast Iron Carnival Shooting Gallery.** Maker unknown but signed S L Snyder possible German or Dutch, ca. 1870 (?). Hit the target on top to activate the blacksmith scene that has a lot of action going on. Professionally restored to working condition. Comes with two weights and a frame to hang it on a wall. 39 1/2" x 32".

4,000/6,000

465. **Ten Cast Iron Shooting Gallery Targets.** Possible H.C. Evans in Chicago. There are eight birds and two stars. Sizes vary.

200/300



465



466



468



467



469

TRADE STIMULATORS

466. **Five Cent "Decatur Fairest Wheel" Cigar Trade Stimulator.** Decatur, Illinois: Decatur Fairest Wheel Works, ca. 1895. The weight of the nickel spins the wheel and if it lands on a number the player wins two or three cigars. The coin entry and back door have possibly been replaced. No key. 22 1/2" x 13 1/2".

500/600

467. **Five Cent "Dicette" Dice Cigarette Trade Stimulator.** Chicago, IL: Bally Manufacturing Co., ca. 1945. Shake the dice, add the numbers and check the award card. Embossed horns of plenty on the aluminum playfield. Lock and key. Not tested. 6 1/2" x 12 3/4" x 13 3/4".

500/700

468. **Roulette Style Trade Stimulator in Wood Box with Layout in Lid.** Maker unknown but possibly Mills or Griswald, ca. 1910. Paper label on wheel and paper layout under glass on inside of lid, Used as a trade stimulator in bars or at carnivals, paper label on wheel is lightly soiled with small tears on inside border, stenciling on lid. 13" x 13" 5".

200/300

469. **One Cent "Little Dream" Oak Penny Drop Trade Stimulator.** Maker unknown, ca. 1910. Original instruction card on top and paper on bottom is baseball related indicating runs and outs, one cent purchases a Regina gumball, crack in wood on right side and minor scratching on playfield, lock and key, 19" x 11" x 9 1/4".

200/300



470

470. **One Cent "Little Chief" Penny Drop Trade Stimulator.** Chief Candy Co., ca. 1930. Indian Chief in headdress on the playfield, if the coin goes into the pocket that the arrow points to the player probably wins a prize or cash, the back unscrews to get to coins that have been played, minor paint loss and playfield very lightly soiled. 14" x 8 1/4" x 6 1/4".

100/200



471



472

471. **Monte Carlo Counter Top Dice Game.** Chicago, Illinois: H.E. Mason Co., 1959. Reverse on glass craps layout with dice, housed in aluminum case, push the rod in and the dice shake and payout as indicated on field. 24" x 12 1/4".

200/300

472. **Monterey Counter Top Dice Game.** Miami, Florida: Monterey Woodcrafters, Inc., ca. 1940. Dice have different colors on all sides and "player must throw a pair of his color to win," push the rod in and the dice shake, Lucite top and wood case, minor scuffing on top. 18" x 12".

200/300



473

473. **Pace Mfct. One Cent Whiz Ball Trade Stimulator.** Chicago, IL: Pace Mfct. Co., ca. 1931. An early version with sheet metal cabinet and wood top and base, five shots for a penny, decal completely worn off marquee and paint worn all sides. Lock and Keys. Not tested. 14 1/2" x 8" x 7".

50/100

PINBALL

474. **Five Cent "Blow-Me-Down" Wood Rail Countertop Pinball Machine.** Sea Grit, New Jersey: Coast Coin Machine Co., ca. 1933. This unusual machine does not shoot the ball with a plunger but rather with a rubber squeeze bulb and a blast of air. Lock, no key. Not tested.

300/400



474



475



476



479



480



481



477



478



482



483



484

475. **One Cent "Little Joe" Wood Rail Countertop Pinball Machine.** Maker unknown, ca. 1935. Each hole on the playfield is a combination of two dice. The term "little joe" refers exclusively to the combination of 2 and 2. The back door is missing, no lock or key. Not tested. 31" x 16" x 8 1/2".

300/400

476. **One Cent "Spot-A-Ball" Wood Rail Countertop Pinball Machine.** Pomaria, South Carolina: Automatic Vending Co., ca. 1930. Embossed marquee on top. Lock and key. Not tested. 24" x 15 1/4" x 9".

300/400

477. **"Five Star Final" Wood Rail Countertop Pinball Machine.** Chicago, Illinois: D. Gottlieb & Co., ca. 1932. Unusual because it has no coin entry. Player probably paid the bartender or operator a penny or nickel then pulled a metal rod out to release the balls. May very well have been an early version. The movie "Five Star Final" came out in 1931 and was up for an academy award. No glass. 28 1/2" x 15 1/2" x 6 3/4".

200/300

478. **One Cent "Baffle Ball" Wood Rail Countertop Pinball Machine.** Chicago, Illinois: D. Gottlieb & Co., ca. 1931. One of the most popular of the early pinball machines. Back door not original, no lock or key. 24" x 16" x 7".

200/300

479. **One Cent "Silver Runway" Wood Rail Countertop Pinball Machine.** Brooklyn, New York: Brooklyn Amusement Machine Co., ca. 1932. Interesting playfield with a silver runway up the middle. No back door, lock or key. 24" x 16" x 7".

200/300

480. **One Cent "Favorite" Wood Rail Countertop Pinball Machine.** Chicago, Illinois: Buckley Mfct. Co., ca. 1932. Horse racing motif on playfield. No glass, back door or key.

200/300

481. **One Cent "Marbel Pool" Wood Rail Countertop Pinball Machine.** Maker unknown, ca. 1935. Numbers on playfield badly faded. Lock and key. Not tested.

100/200

482. **One Cent "Official Pin Table" Wood Rail Countertop Pinball Machine.** Chicago, Illinois: Mills Novelty Co., ca. 1932. No back door, lock or key. 21 3/4" x 11 1/4" x 6".

100/200

483. **One Cent Countertop Pinball Machine.** Maker unknown, ca. 1933. Original blue paint worn in places. No lock or key, balls. Not tested. 19" x 11" x 5 1/4".

50/100

484. **Five Cent Jack & Jill Two Player Wood Rail Countertop Pinball Machine.** Chicago, Illinois: Bally Mfct. Co., ca. 1933. Two players can play at the same time. Twenty balls for a nickel. Four legs but no screws, no glass, back and front door detached, no lock or key. 37" x 27" x 10". Not tested.

200/400



486



485

MISCELLANEOUS

485. Jones, Spike (Lindley Armstrong Jones). **A Comedy Violin and Trunk Belonging to Spike Jones.** Manufacturers unknown, ca. 1950s. Including a vintage novelty violin incorporating a mouthpiece allowing Jones to blow a stream of soap bubbles up from the instrument's body - the sort of feature much in keeping with the musician's wacky performance style; and a large wooden trunk with Jones's name stenciled in white on one end. 35" x 21" x 24". Violin in need of restringing.

800/1,200

486. **Large Carousel Roaring Lion Figure.** Manufacturer unknown, fourth quarter twentieth century. Heavy and imposing wooden lion figure with blanket saddle and chain collar. Approx. 55 x 12 x 40". Stress cracks at head, but very good overall.

400/600

487. **Large Carousel Tiger Figure.** Manufacturer unknown, fourth quarter twentieth century. Heavy and imposing wooden tiger figure with hand-painted floral saddle and angel cante. Approx. 57 x 12 x 33". Minor chipping to left ear, else good.

500/700



487

488. **Collection of Education Stereoscopic Film Strips.** Illinois: Tru-Vue Inc., 1933-34. Kodak-Eastman Safety Film, 35mm. A set of 55 short slideshows/films on safety film with educational subject matters like Brookfield Zoo, Columbia River Highway, and the Great Smokey Mountains. Meant to be viewed with a Tru-Vue viewer which made the images seem 3D. Contained in film reel canister. Good condition, however vinegar odor is present.

50/100



488

489-490. **No Lot.**

491. **Paris Garters "Time for a Fresh Pair?" Counter Top Display Cabinet.** A. Stein Co., ca. 1908. Counter top store display cabinet for Paris garters. Light crackling on upper and lower decals and back door slightly warped. Comes with two boxes for garters one has a pair of garters the other is empty. 17 1/2" x 15 3/4" x 5".

100/200



491



495

492-494. **No Lot**

495. **Two Sets of Stereoview Cards.** Both depict stage productions, twelve of one and fifteen of the other.

50/100

496. **Unusual Jewelry Store Display Stand for W-W-W Rings.** W-W-W Rings, ca. 1900. A magical display enabling the customer to view a ring behind the sign using the periscope type viewing device. Periscope device detached, in need of remounting. 26" x 7 1/2" x 12."

100/200



496



497

497. **Pretzel Pottery Flask.** Maker unknown, ca. 1900. Pretzel flask with sea salt granules. Cork in top appears original. No chips or cracks.

100/200

498. **Pottery "Cha. D. Moul" Advertising Liquor Jug.** York, Penn.: Chas. D. Moul, ca. 1900. Early pottery whisky jug with advertising. 7" x 4 1/2".

100/200



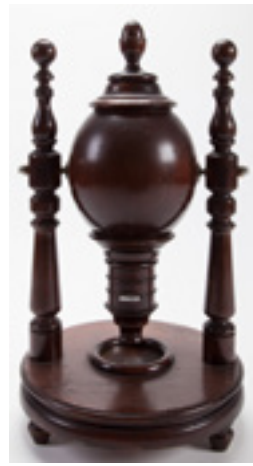
498



499

499. **Three Miscellaneous Bottles.** Including a one pint ten ounce Moxie bottle with paper label, Ted William's "Creamy Root Beer;" and John J. Magahern whisky blend. Largest 10 1/2".

100/200



500



505



506



507

500. **Keno Goose.** Maker unknown, ca. 1920. All original mahogany keno goose used for playing keno, much like bingo. Nicely turned feet. 24" x 12".

200/300

501. **"Coin Telephone" Vintage Brass Sign.** Maker unknown, ca. 1930. Nicely embossed brass sign indicating that a coin telephone is available. 16 1/2" x 2 1/2".

50/100

502. **Two Vintage Toasters.** Including a General Electric toaster with porcelain base (ca. 1908), and an Electrix (n.d.) toaster with cord.

200/300

503. **Group of Three Antique Magic Lantern Slides.** The first depicting President Abraham Lincoln seated in his box at Ford's Theater, Washington, D.C., where he was assassinated; the second of Union soldiers rallying at Washington; and the third depicting Lady Liberty among the clouds with the Capitol building the background. Oak frames (7 x 4"). Very good.

80/150

504. **Group of Over a Dozen Vintage Christmas Lights Sets in Vintage Decorative Boxes.** Bulk 1930s. General Electric, Edison Mazda, Darowlite, Westinghouse, Noma, Polly's, and other manufacturers. In original decorative color pictorial boxes, with smaller sets packed inside candy boxes by Hershey's, Snicker's, Three Musketeers, and others. Condition generally good.

150/250

505. **Pair of Antique Patriotic Snare Drums.** American, mid or late nineteenth century. The first with embossed brass panels with the 13-star American colonial flag, the rims with a design of interlocking hearts, apparently original brass stays and roping; the second with a tin body with an *E Pluribus Unum* decal.

400/600

506. **Antique Wooden Decoy Mallard Duck.** American, first or second quarter twentieth century. Attractively hand-painted and carved duck figure. 12 x 6 x 5". Age-consistent chipping, stress cracking.

100/200

507. **Vintage Santa Claus Chocolate Mold.** American, ca. 1950s. Trio of Santa Claus figures in heavy metal clasping grid. 15 x 12 x 5". Very good.

150/250

508. **Antique Didisheim-Goldschmidt Desk Clock.** Swiss, first quarter twentieth century. Beautifully hand-painted vignette on enamel, depicting a seaside castle with sailing vessels and rowboats in the water against a mountainous backdrop. On a later marble base. Hallmarked "Didisheim Goldschmidt Fils & Co. Swiss, Fab. Suisse Metal Dore," back of case further stamped "Le Vieux Chateau" with series number 2909. Approx. 4 x 3" exclusive of base.

600/900

509. **Collection of Antique Pocket Watch Face Impression Die Plates.** Circa 1910s - 20s. Including 20 steel plates of various design for dials by Elgin, Waltham, and Belmar. Each approx. 2 1/4" square. Overall very good.

400/600

510. **Cabinet Card Portrait of Native American Man and Child.** Mansfield, Ohio, ca. 1900s. Depicting a Native American man in headdress holding a flag and standing in a field with a young girl, a teepee visible in the background. 6 1/2 x 4 1/2". Very good.

50/150



501



502



503



504



508



509



510



511



512



513

511. Cheney, John Vance (American, 1848 - 1922). **Scrapbook of Ephemera Relating to Cheney and His Wife.** Bulk 1900s. In a single buckram volume with marbled sides, well over 150 pieces neatly organized, including business cards, invitations, newspaper clippings, and correspondence. Should be seen.

250/400

512. [Chicago] **Massive Lot of Nineteenth Century Chicago-Related Books and Ephemera.** Approximately 100 pieces, including *Illustrations of Greater Chicago* (1875); *One Year From the Fire* (1875); three large-format antique photo-engravings of the grounds of the 1893 Columbian Exposition; six antique color lithographs of the Columbian Exposition (Winters Art Press, 1894); assorted ephemera including quantities advertisements and illustrations from books, magazines, and newspapers; letterheads, and more. Should be seen.

500/700

513. [Chicago] **Massive Merchant Scrapbook of Nineteenth Clothiers and Cloakers Ephemera.** Chicago: Willoughby, Hill & Co., 1870s - 80s. Apparently the merchant's own file of company ephemera, neatly organized in a cloth folio ledger, containing hundreds of pieces including letters, trimmed and printed advertisements, store credit slips, and more. Should be seen.

200/300

END OF SESSION ONE



REGISTRATION & ABSENTEE BID FORM

TELEPHONE BID ABSENTEE BID

Bidder Number

Name _____

Phone _____

Business Name (If applicable) _____

E-mail Address _____

Billing Address _____

Credit Card Number (required for all new bidders) _____

City/State/Zip _____

Expiration Date & Security Code _____

Lot Number	Description	U.S. Dollar Limit (Exclusive of Buyer's Premium)

For absentee bids, indicate your limit for each lot, excluding the Buyers' Premium. Your bids will be executed at the lowest prices allowed by reserves and other bids. If more than one bid of the same value is received, the first bid received will take precedence.	I authorize Potter & Potter Auctions to bid on my behalf up to the amount(s) stated above. I agree that all purchases are subject to the "Condition of Sale" as stated in the sale catalogue and that I will pay for these lots on receipt of invoice.	
- "+" bids indicate willingness to go up one increment if needed to break a tie. "Buy" or unlimited bids are not accepted. -References and/or a deposit are required of bidders not known to Potter & Potter Auctions, Inc. -A buyer's premium of 20% per lot is payable on each successful bid.	SIGNATURE _____	DATE _____
Potter & Potter is not responsible for failure or other inadvertent errors relating to execution of your bids. THE AUCTIONEER'S DECISIONS ARE FINAL.	FOR POTTER & POTTER _____	DATE _____

Bids may be executed via fax: 773-260-1462, mail (address below), or email: potterauctions@gmail.com until 5:00 PM (CDT) on the last business day immediately preceding the sale. *Bidding will then be closed to fax and email.*

Potter & Potter encourages you to mail, fax and email bids, as telephone bidders will be served on a first come, first served basis.

POTTER & POTTER AUCTIONS, INC.
3759 N. RAVENSWOOD AVE., SUITE 121, CHICAGO, IL 60613
PHONE: 773-472-1442 / FAX: 773-260-1462
www.potterauctions.com

CONDITIONS OF SALE

The lots listed in this catalogue (whether printed or posted online) will be offered at public auction by Potter and Potter Auctions, Inc., as agent for consignor(s) subject to the following terms and conditions. By bidding at auction you agree to be bound by these Conditions of Sale.

PRIOR TO THE SALE

Please examine lots. Prospective buyers are strongly advised to “in person” or by personally retained Agent, examine any property in which they are interested before the auction takes place. Condition reports may be provided if requested in a timely manner.

Condition of lots, Warranties and Representations - All lots are sold “AS IS” and without recourse, and neither Potter and Potter Auctions, Inc. nor its consignor(s) makes any warranties or representations, express or implied with respect to such lots. Neither Potter and Potter Auctions, Inc. nor its consignor(s) makes any express or implied warranty or representation of any kind or nature with respect to merchantability, fitness for purpose, correctness of the catalogue or other description of the physical condition, size, quality, rarity, importance, medium, material, genuineness, attribution, provenance, period, source, origin, completeness, historical significance of any lot sold. The absence of any reference to the condition of a lot does not imply that the lot is in perfect condition or completely free from wear and tear, imperfections or the effects of aging. No statement, whether written or oral, and whether made in the catalogue, or in supplements to the catalogue, an advertisement, a bill of sale, a posting or announcement, the remarks of an auctioneer, or otherwise, shall be deemed to create any warranty, representation or assumption of liability. Potter and Potter Auctions, Inc. and its consignor(s) make no warranty or representation, express or implied, that the purchaser will acquire any copyright or reproduction rights to any lot sold.

AT THE SALE

Registration Before Bidding - A prospective buyer must complete and sign a registration form and provide identification before bidding. We may require bank or other financial references. Potter and Potter Auctions, Inc., is under no obligation to approve the registration of any prospective registrant.

Bidding as Principal - When making a bid, a bidder is accepting personal liability to pay the purchase price, including the buyer’s premium, all applicable taxes and all other applicable charges, unless it has been explicitly agreed upon in writing with Potter and Potter Auctions, Inc. before the commencement of the sale that the bidder is acting as agent on behalf of an identified third party acceptable to Potter and Potter Auctions, Inc., and that Potter and Potter Auctions, Inc. will only look to the principal for payment.

Absentee Bids - Potter and Potter Auctions, Inc. will use reasonable efforts to carry out written bids given to us prior to the sale for the convenience of clients who are not present at the auction in person. Bids must be placed in U.S. dollars. If we receive written bids on a particular lot for identical amounts, and these are the highest bids on the lot at the auction, it will be sold to the person whose written bid was received and accepted first. Execution of written bids is a free service undertaken subject to other commitments at the time of the sale and Potter and Potter Auctions, Inc. does not not accept liability for failing to execute a written bid or for errors and omissions in connection with such written bid(s).

Telephone Bids - If a prospective buyer makes arrangements with us prior to the commencement of the sale we will use reasonable efforts to contact said prospective buyer to enable them to participate in the bidding by telephone and we do not accept liability for failure to do so or for errors and omissions in connection with telephone bidding.

Bidding Increments - Expected bid increments are as follows:

Min Value	Max Value	Increment
\$0.00	\$29.00	\$5.00
\$30.00	\$99.00	\$10.00
\$100.00	\$499.00	\$25.00
\$500.00	\$999.00	\$50.00
\$1000.00	\$1,999.00	\$100.00
\$2,000.00	\$5,999.00	\$200.00
\$6,000.00	\$9,999.00	\$500.00
\$10,000.00	\$19,999.00	\$1,000.00
\$20,000.00	\$49,999.00	\$2,000.00
\$50,000.00	and above	10% of current bid

Note: the auctioneer may modify the increments at any time.

Reserves - Although the majority of the lots in the sale are offered without reserve, some lots in the sale may be subject to a reserve which is the confidential minimum price below which such lot will not be sold. The reserve will not exceed the low estimate of the lot. Reserves are agreed upon with consignors or, in the absence thereof, the absolute discretion of Potter and Potter Auctions, Inc. The auctioneer may open the bidding on any lot below the reserve by placing a bid on behalf of the seller. The auctioneer may continue to bid on behalf of the seller up to the amount of the reserve, either by placing consecutive bids or by placing bids in response to other bidders. With respect to lots that are offered without reserve, unless there are already competing bids, the auctioneer, in his or her discretion, will generally open the bidding at half of the low estimate for the lot. In the absence of a bid at that level, the auctioneer may proceed backwards at his or her discretion until a bid is recognized, and then continue up from that amount.

Auctioneer’s Discretion - The auctioneer has the right at his or her absolute and sole discretion to refuse any bid, to advance the bidding in such a manner as he or she may decide, to withdraw any lot, and in the case of error or dispute, and whether during or after the sale, to determine the successful bidder, to continue the bidding, to cancel the sale or to reoffer and resell the item in dispute. If any dispute arises after the sale, our sale record is conclusive.

Successful Bid - The highest bidder acknowledged by the auctioneer will be the purchaser. In the case of a tie bid, the winning bidder will determined by the auctioneer at his or her sole discretion. In the event of a dispute between bidders, the auctioneer has final discretion to determine the successful bidder or to reoffer the lot in dispute. If any dispute arises after the sale, the Potter and Potter Auctions, Inc. sale record shall be conclusive. Title passes upon the fall of the auctioneer’s hammer to the highest acknowledged bidder subject to the Conditions of Sale set forth herein, and the bidder assumes full risk and responsibility.

AFTER THE SALE

Buyer’s Premium - In addition to the hammer price, the buyer agrees to pay Potter and Potter Auctions, Inc. a buyer’s premium of 20%, and the applicable sales tax added to the final total.

Payment - The buyer must pay the entire amount due (including the hammer price, buyer’s premium, all applicable taxes and other charges) no later than 5 p.m. on the seventh (7) business day following the sale. Payment in U.S. dollars may be made with cash; bank check or cashier’s check drawn on a U.S. bank; money order; or wire transfer unless other arrangements are made with Potter and Potter Auctions, Inc. Potter and Potter Auctions, Inc. reserves the right to hold merchandise purchased by personal check until the check has cleared the bank.

The purchaser agrees to pay Potter and Potter Auctions, Inc. a handling charge of \$50 for any check dishonored by the drawee. In the event buyer desires to pay by using a credit card, a convenience fee equaling 2.5% of the entire amount due shall be added to the buyer’s invoice.

Packing and Shipping - If your bid is successful, as an alternative to in-house shipping, we can provide you with a list of shippers. We will not be responsible for the acts or omissions of carriers or packers whether or not recommended by us. Property will not be released to the shipper without the buyer’s written consent and until payment has been made in full. Packing and handling by us of purchased lots is at the entire risk of the purchaser, and Potter and Potter Auctions, Inc. will have no liability of any loss or damage to such items. Packing and shipping expenses shall be added to buyer’s invoice and will reflect a charge for labor, materials, insurance, transportation, as well as actual shipper fees.

Non-Payment - If we do not receive payment in full, in good cleared funds, within seven (7) business days following the sale, we are entitled in our absolute discretion to exercise one or more of the following measures, in addition to any additional actions available to us by law: (1) to impose a late charge of one and a half percent (1.5%) per thirty (30) days of the total purchase price, prorated to commence on the date of the sale; (2) to hold the defaulting buyer liable for the total amount due and to begin legal proceedings for its recovery together with interest, legal fees and costs to the fullest extent permitted under applicable law; (3) to rescind the sale; (4) to resell the property publicly or privately with such terms as we find appropriate; (5) to resell the property at public auction without reserve, and with the purchaser liable for any deficiency, cost, including handling charges, the expenses of both sales, our commission on both sales at our regular rate, all other charges due hereunder and incidental damages. In addition, a defaulting purchaser will be deemed to have granted us a security interest in, and we may retain as collateral security for such purchaser’s obligations to us, any property in our possession owned by such purchaser. At our option, payment will not be deemed to have been made in full until we have collected funds represented by checks, or in the case of bank or cashier’s checks, we have confirmed their authenticity; (6) to offset against any amount owed; (7) to not allow any bids at any upcoming auction by or on behalf of the buyer; (8) to take other action as we find necessary or appropriate.

Potter & Potter Auctions, Inc.
(Illinois Lic. # 444.000388)
3759 N. Ravenswood Ave.
-Suite 121-
Chicago, IL 60613

Phone: (773) 472-1442
Fax: (773) 260-1462
www.potterauctions.com
info@potterauctions.com

Sami Fajuri, Managing Auctioneer
Lic. #441.001540

Text: Sami Fajuri, Gabe Fajuri, Joe Slabaugh,
Larry Lubliner, Stina Henslee, and Marian Thompson
Layout and Design: Stina Henslee
Photography: David Linsell and Kristine Kuczora

Contents copyright © 2016 by Potter & Potter Auctions, Inc.

All rights reserved. No part of this publication may be reproduced or transmitted in any form or by any means, electronic or mechanical, including photocopy, recording or any information storage and retrieval system now known or to be invented, without permission in writing from the copyright holders.

LIABILITY

Condition Reports - Potter and Potter Auctions, Inc. is not responsible for the correctness of any statement of any kind concerning any lot, whether written or oral, nor for any other errors or omissions in description or for any faults or defects in any lot. Neither the seller, ourselves, our officers, employees or agents, give any representation, warranty or guarantee or assume any liability of any kind in respect of any lot with regard to merchantability, fitness for a particular purpose, description, size, quality, completeness, condition, attribution, authenticity, rarity, importance, medium, provenance, prior ownership history, or historical relevance. Except as required by local law any warranty of any kind whatsoever is excluded by this paragraph.

Purchased Lots - If for any reason a purchased lot cannot be delivered in the same condition as at the time of sale, or should any purchased lot be stolen, misdelivered or lost prior to delivery, Potter and Potter Auctions, Inc. shall not be liable for any amount in excess of that paid by the purchaser.

Legal Ramifications - The rights and obligations of the parties with respect to these Conditions of Sale, the conduct of the auction and any matters connected with any of the foregoing shall be governed and interpreted by the laws of the jurisdiction in Illinois. If any part of these Conditions of Sale is found by any court to be invalid, illegal or unenforceable, that part shall be discounted and the rest of the conditions shall continue to be valid to the fullest extent permitted by law.

Discretion - Any and all of the conditions may be waived or modified in the sole discretion of Potter and Potter Auctions, Inc.

Note: Many supplemental and detailed images of auction lots ~ not shown in the pages of this catalog ~ are available online at *Liveauctioneers.com*, or directly from Potter & Potter.

Potter & Potter wishes to thank Pierre Mayer, John and Jan Zweifel, Dave Whitaker, Louise Tessing, Bob Zurko, Rhonda Hawes, Joe Vojacek, Steve Rowling, Stan Abrams, Bud Meyer, Joanne Smuda, Harlan Hogan, Mark Patterson, Ed Nickels, Steve Crowley, Sharon and Ernie Avendano, Henry Muller, Alex Warschaw, Joe Breitenbucher, Mark Rosenthal, Mario Carrandi, Barbara Baldwin, Dave Gartler, Jeff Wahlgren, Steve and Cara Herman, Larry Weiner, Ron “Chicago” Vaughns, George Polakass, Duff Johnson, Dale Seymour, Muriel Minot, and Tim Kerr for their assistance in the preparation of this catalog.